

# SEA EAGLE.com<sup>®</sup>



## Sea Eagle Motormount Boats

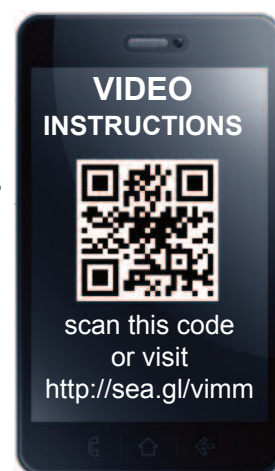
SE-8 & SE-9

Instruction & Owner's Manual

For video instructions visit [SeaEagle.com/Instructions](http://SeaEagle.com/Instructions)

Sea Eagle Boats Inc.  
19 N. Columbia Street, Suite 1  
Port Jefferson, NY 11777  
1-800-748-8066

September 2012



## Sea Eagle Guarantee

Congratulations on purchasing a Sea Eagle! With over 40 years of experience in designing, selling and using these quality inflatables, we're confident that you are going to love your Sea Eagle and we're ready to proudly stand behind them.

### Sea Eagle Warranty

All Sea Eagle products come standard with a 3 year warranty against any manufacturing defect that begins the date that your product is delivered. Sea Eagle will refuse delivery on all packages without a valid return authorization number and will not be responsible for the shipping or handling charges. To obtain a return authorization number, please contact Sea Eagle directly unless you purchased from an authorized dealer/reseller in which case you should contact them for more information.

Sea Eagle must inspect equipment in order to determine if there is a defect. In the event that an item must be shipped back to us for inspection, Sea Eagle will only reimburse the standard return shipping charge through FedEx, UPS or the U.S. Post Office at published shipping rates. Retail shipping outlets like The UPS Store will not be reimbursed and you will be responsible for handling and packing charges.

The Sea Eagle warranty does not apply to products that are manufactured by Minn Kota or Torqeedo. These products are covered by their own, respective warranties. Please refer to the manufacturer's warranty of each product for details.

If you received an item damaged, please call the shipping carrier to report damaged merchandise. Do not return damaged merchandise until it has been inspected by the carrier. Sea Eagle will be notified by the carrier when they have completed their inspection and if necessary, Sea Eagle will arrange for the repair or replacement of damaged merchandise.

## Decals, Stickers & Registration

Always contact your state boating authorities for information on boating registration and regulations. Most states require you to register your boat if you are using a motor.\*

Upon registration it may be required to provide the Manufacturer's Statement of Origin.

Purchases made through an authorized dealer or reseller may require for you to contact them directly in order to obtain this. You may be charged your own state sales tax if you were not charged sales tax at the time of purchase.

Registered boats generally require for the registration number to be applied to the boat. We do not recommend the use of decals or stickers as they tend to crack and peel over time with the repeated inflation and deflation of your Sea Eagle. Instead we suggest applying these numbers to a small piece of hard plastic or marine plywood and hanging it from your boat like a license plate if permitted by your state. Another method is to apply the numbers to the hull using either PVC based paint or permanent marker.

***\* Please note that our Sea Eagle Explorer Kayaks, FastTrack Kayaks, Sport Kayaks and LB-11 LongBoard are not rated for use with a motor.***

## Contact Us

Unlike many other companies today we pride ourselves on answering the phone and helping you with any concerns, questions or special ordering needs that you may have!

Feel free to give us a call at 1-800-748-8066 and we will be happy to talk with you!  
Our business hours are Monday to Friday from 9-5 (EST).

**Sea Eagle Boats Inc.**  
19 N. Columbia Street, Suite 1  
Port Jefferson NY 11777  
1-800-748-8066  
staff@seaeagle.com

# Operating Your Sea Eagle

## Fishing

Motormount Boats are ideal for fishing because you can launch them just about anywhere there are fish! Often the best fishing spots are the ones that are the most difficult to reach that do not have a ramp or roadway leading all the way down to the water. Because Sea Eagle Motormount Boats are so lightweight you can launch it from just about anywhere.

## Motoring

Your Sea Eagle Motormount Boat is rated for use with either a small electric or gas motor with the use of a motor mount. Since your Motormount Boat is designed for use with small engines, you won't always be able to motor past every current. These boats are rated by the National Marine Manufacturer's Association for a motor's maximum capacity for both dry weight and horsepower. Under no circumstance should you equip a motor that exceeds these capacities (whether they be for the dry weight or the horsepower or both). Please also note that you should never tow your Sea Eagle above 3 M.P.H. in calm waters and **DO NOT ATTEMPT TO TOW PEOPLE!** Not only can these things result in damaging your Sea Eagle Motormount Boat, it will also void your Sea Eagle warranty.

Gas motors are measured in units of horsepower and are generally built with power and speed in mind. To get the best performance out of your Motormount Boat we recommend using a 15" short shaft, although a longer shaft can be used in greater depths of water.

Traditional electric motors are measured in units of thrust (the pulling or pushing power of a motor) and are slower and quieter on the water than gas motors. There is no direct correlation of thrust to horsepower although most will consider traditional electric motors to be about a 1HP (which is more of a guess than an approximation).

Advantages of having an electric motor over a gas is that they are lighter to transport and easier to maintain. In order to operate an electric motor you will need a 12V deep cycle marine battery. Other suggested accessories are a battery charger and a battery power center to house the battery itself.

The Torqeedo Travel 1003s electric motor is unlike any other electric motor on the market today. Powered by a waterproof lithium ion battery (battery charger included), the Travel 1003s delivers the true 3HP performance of a gas motor! Features include on board computer display, GPS and an audible alarm when the battery reaches 30%.

Torqeedo electric motors are lighter to transport than gas motors and do not require a heavy 12V battery like traditional electric motors. You can also power your Torqeedo Travel 1003s using the Sea Eagle/PowerFilm Solar Panel.

***Minn Kota, PowerFilm & Torqeedo products come with a manufacture warranty and are not covered by the Sea Eagle warranty. All warranty work is handled directly by the respective manufacturer and all sales on these products are final.***

## Rowing

You will be surprised how easy it is to row your boat. It is best to sit in the bow on the blue inflatable SED seat for a low rowing position with back support provided by the bow of the boat. Place the oars through the blue carry handles on the sides of the boat which double as oarlocks.

You may be surprised at how easy it is to row your Sea Eagle. We recommend rowing your Sea Eagle Motormount boat using the blue inflatable SED seat in the bow of the boat. When you row forwards, you face backwards. This means you will have a great view of where you have been, but almost no view of where you are going. Be sure to check over your shoulder frequently to avoid any obstacles or obstructions. Be aware of the conditions of the water you are rowing in.

You should be aware of any and all obstacles and dangers that you might encounter (i.e. buoys, docks, moored boats, motor boats, sail boats, waves, weather, lightning, rain, etc). Please note to give way to both motor boats and sail boats as they have the right of way.

If you are new to rowing, we suggest that you practice rowing for several hours near the shore before venturing out further onto open waters. Practice only makes perfect and ensures that you are comfortable in your boat in almost any weather conditions you may come across. Continually practice your rowing strokes, trying to make them as fluid and smooth as possible.

When pulling your oars through the water you should try to keep the blades fully immersed in the water, but as close to the surface as possible. This will give you greater rowing leverage. Even if you are motoring your Sea Eagle, we always

## Safety

In a manual of this type it is impossible to give adequate space to the topic of water safety. For further information on boating safety, visit [USCGBoating.org](http://USCGBoating.org) or enroll in one of the excellent water safety courses provided.

It is your responsibility to be aware of and comply with all relevant safety regulations. For all water recreation or sport you should have a reasonable swimming ability. Just as swimmers have a cardinal rule about not swimming alone, it is strongly advised that you should never go boating alone.

### Boating Safety Tips

- Always wear a USCG approved PFD (life vest) at all times while on the water.
- Be aware of your local boating rules and regulations and abide by them accordingly.
- Check inflation levels each time before you go out and inflate your boat for a full 24 hours before undertaking long trips.
- DO NOT allow children to use Sea Eagle unsupervised.
- DO NOT consume alcohol while boating or operating a boat while under the influence of alcohol or drugs.
- DO NOT drag your Sea Eagle over rocks or gravel if it can be avoided.
- DO NOT exceed the certified maximum capacities of this boat under any circumstance.
- DO NOT go boating alone.
- DO NOT use compressors, co2 or compressed air for inflation, only use Sea Eagle recommended pumps.
- DO NOT use your Sea Eagle Boat as a personal flotation device as they are designed for leisure/recreation in mind.
- DO NOT sleep inside of your Sea Eagle while on the water.

### Safety Equipment

The type of water conditions you are on should determine the type of safety equipment that you should have on board. For all types of boating we strongly recommend that every passenger wear a USCG approved PFD (personal flotation device) like a life vest. In most places this is a requirement by law, but from our point of view it is also an exercise of good judgment to have a PFD for all passengers. Other important items to consider for all types of boating...

**Drinking Water & Snacks:** Kayaking is a physical activity that can work up both a thirst and a sweat and especially on a hot or warm day it is a good idea to have drinking water readily available to you to prevent dehydration. Bring a good amount of water for all passengers as you want to avoid drinking the water you're kayaking in which may be full of contaminants.

**Extra Clothes/Layers:** You never know when the weather can change and it's a good idea to come prepared with extra clothing. If you have a dry (waterproof) bag than we recommend storing them inside so they're not damp in case of emergency.

**First Aid-Kit:** The contents of the kit may vary depending upon your preferences, but make sure to carry a kit that reflects the possible dangers for the conditions you are in.

**Foot Pump/Repair Kit:** Although our boats are both durable and rugged, it may be possible that you need to make a repair while on the water in which case you'll need the repair kit and the foot pump to re-inflate the boat. If this is your first repair, you may also want to bring this instruction manual with you.

**Sun/Rain Protection:** A hat can protect both your face and head from the rain or sun. You may also want to carry sunscreen with you as both the sun and the sun's reflection from the water can do serious damage to your skin. If you are out for prolonged periods of time you may need to reapply sunscreen as needed.

**Whistle:** Having a whistle readily available to you in case of emergency is a great way to attract the attention of others if assistance is needed.

## Inflation Valves & Pumps



### One-Way Air Valves

Place the retainer ring over the valve base and screw the valve into the base. Unscrew the outer cap on the valve to reveal the inflation port.



To inflate a one-way valve, simply place the adapter into the valve and begin pumping with your foot pump. When you're finished, screw the outer cap of the valve closed.



### Pipe Valves

These simple, compact valves are used on both the inflatable FHS & SED seats and the floor chambers of your boat.



To inflate a pipe valve, first attach one of the cone shaped nozzles into the large rounded adapter and insert it into the pipe valve and begin pumping with your foot pump.



### Foot Pump

The foot pump is a high capacity pump made of durable ABS plastic. To use simply press the two halves of the foot pump together and connect the hose to the inflation port marked OUT.



To close, tightly pinch the middle of the valve with your forefinger and thumb while removing the pump nozzle from the valve. Squeeze tightly, and hold the valve at the very bottom to prevent the air from seeping out while you plug the valve at the top.



The triple nozzle adapter comes with the foot pump and is needed to inflate both the one-way air valve and the pipe valves. Insert the ribbed end of the large rounded adapter piece into the hose of your foot pump.



### MB-80 Electric Pump (OPTIONAL)

This electric pump works using the 12V power outlet in your car. Please note that the star shaped valve adapters and deflation cap are not necessary for Sea Eagle boats.

## Assembly & Inflation



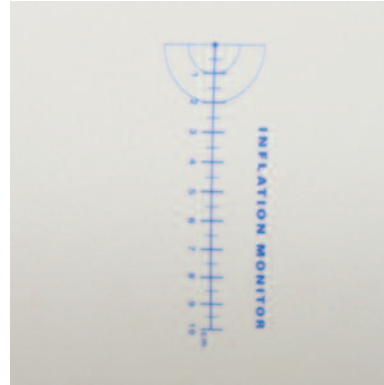
First, make sure your pump is switched OFF and then insert the power adapter into the power outlet. If you have a weak battery you may want to keep your engine running while you're using the pump.



To begin unroll your boat on a clean, flat surface. Locate the three main air chambers (they are numbered 1-3) and screw the deluxe one-way air valves to them. Make sure not to cross the threads when screwing the valve into the base or when tightening the outer cap.



No extra nozzles are needed to inflate the main air chambers of your boat, just insert the pump into the valve and switch it on. Do not drop or suddenly move the pump while it is



Chambers #1 & #3 feature a diagram of the plastic inflation monitor that is included with this boat. As you begin to inflate, the hull material will stretch so that the diagram matches the clear plastic inflation monitor.



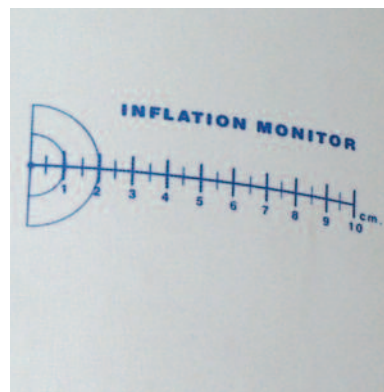
To inflate the floor chambers using the MB-80 you will need to attach the tube extender and large cone nozzle to the end of the pump.



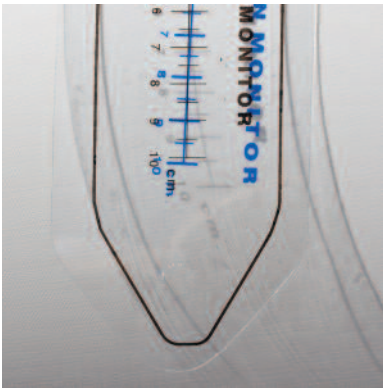
Begin by inflating the two pipe valves on the floor and then proceed to the main chambers beginning with chamber #1 which is the upper safety chamber. This guarantees that its fully inflated which is vital in the unlikely event that another chamber loses air.



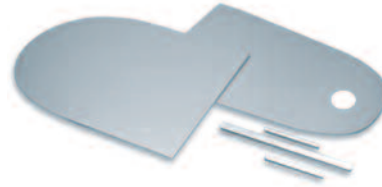
Air compressors that are designed for other uses like tire inflation (usually around 50 PSI) can easily harm your Sea Eagle which works at a much lower pressure of 1.1 PSI. For this reason we recommend only using Sea Eagle pumps.



Next inflate chambers #2 & #3 and use the printed diagram on chambers #1 & #3 to match the pattern with the clear plastic inflation monitor. Note that chamber #1 will not be an exact match until #3 is fully inflated.



You can safely inflate one centimeter beyond the diagram. Once fully inflated you should be able to indent your thumb into the boat about  $\frac{1}{2}$  to  $\frac{3}{4}$  of an inch. If you are using floorboards, only inflate the main chambers 75% full until they're installed and then finish inflation.



### Floorboards (OPTIONAL)

The floorboards for our Motormount Boats are comprised of marine plywood (two pieces) and an aluminum three piece floorboard strut that form an "H" when installed.



### AB25-3 Oar Set

The AB25-3 Oar is 56" long and easily rows your Sea Eagle 8 or 9. Each oar includes an ABS blade, aluminum shaft and drip ring.



Place both the bow and stern (identified by the cut out hole) floorboard pieces inside the boat so that they overlap in the middle. Next, lift the floorboard pieces at the center and insert the middle section of the "H" strut.



Assemble the AB25-3 by sliding the drip ring over the shaft and then connect the shaft to the blade. Tighten the ring at the bottom of the blade so that its secure on the shaft. We always recommend testing the connection of the blade and shaft on dry land rather than in the water.



With the strut connected to both floorboard pieces force the boards down into the boat until they are secure.



To row your boat using the AB-253 oar set, use the blue carry handles as oar locks. Although the handle is a snug fit for the shaft of the oar, you can keep the drip ring on the inside of the boat to act as a stopper and keeping the shaft in place.



Once the floorboards are flattened, continue to install the side struts on each side of the floorboards.



Make sure the side struts meet up with the middle strut. After both floorboards are in place you can install your motor mount. If you're not installing a motor mount, proceed to finish the inflation on the main chambers as instructed in this manual.



Insert the long, straight end of the rods through the grommets at the stern of your boat (over the MSB). Secure them using the velcro straps on the MSB and by inserting the included clevis pin through the pre-drilled hole at the end of the rod.



**MSB (OPTIONAL)**

Place the Motormount Support Bench in the stern of the boat before the motormount is installed. The velcro straps should be on the top side and the pre-drilled hole in the seat should be placed directly over chamber #1.



Insert the shorter, bent end of the rods through the grommets at the stern which are located underneath the boat. Push the rods in far enough so that the push pins secure the rod into place.



**Motormount (OPTIONAL)**

Your boat should be around 75% inflated which gives the boat some structure but still keeps it pliable for an easy install. We highly recommend using both the MSB and floorboard set if you plan on using the motormount.



To attach the wooden motormount block, hold it to the back of the two aluminum rods and place the "U" shaped clamps between the rods and the boat and then secure them using the bolts and knurled nuts.



Begin by inserting the closure caps into both ends of each of the two aluminum rods. These rods are bent inward to transfer pressure from the motormount.



Make sure that the mount is at the highest possible position when installed on your boat for the best results when using a motor.



**Inflatable Rowing Seat (OPTIONAL)**

A comfortable inflatable seat to row from, place this seat in the bow of the boat so that you can row forwards (meaning you're facing the back of the boat).



**Rod Holder (OPTIONAL)**

The open design of this rod holder accepts all types of rod and reel systems. Includes side mount and top flush mount adapters and hardware. Can be mounted to either the MSB or SPW wooden bench seat.



**Inflatable High Seat (OPTIONAL)**

The Fisherman's High Seat is a comfortable, inflatable seat that can be used to either motor or fish from the boat.



**Carry Bag (OPTIONAL)**

This 440 Denier Nylon carry bag measures 26"x48" and is great for the transportation of your Sea Eagle. Comes with convenient carry strap and drawstring.



**SPW Wooden Bench (OPTIONAL)**

Made of a 3/4" 15 ply marine plywood. Secure the seat to the boat by untying the rope around your Sea Eagle and running it through the pre-drilled holes on each side of the seat. Once done, re-tie the rope.



**Mushroom Anchor Kit (OPTIONAL)**

This anchor kit includes a 8 lb. PVC coated mushroom anchor, 25' of 5/16" rope. The kit also includes an anchor grip to hold the rope in place, this grip can be mounted to any of the wooden bench seats.



**Swivel Seat (OPTIONAL)**

Swivels 360° and offers great back support. Seat can be used with either the stand (sold separately) or mounted to the MSB. We do not recommend using the seat w/stand while the boat is in motion and we recommend against mounting it to the SPW.



**EZ Cart (S) (OPTIONAL)**

This easy to assemble cart wheel system fits under your Sea Eagle, making transport even easier. Allows you to roll your Sea Eagle to & from your launching point. Breaks down for easy storage.



### Windshield (OPTIONAL)

A durable and flexible Plexiglass windshield that is great for deflecting water on choppy days. Before installing, remove the protective film from each side of the windshield and tie a knot at one end of the included rope which is used to secure it.



### Canopy (OPTIONAL)

Keeps you cool and protected from the harmful UV rays of the sun or keeps you dry in the rain. Easily folds down and out of the way.



The windshield is easy to install and does not require the boat to be deflated. Start at either end in the bow of the boat and locate six small grommets. Place the windshield over the the grommet and run the rope through it to press the windshield against the boat.



Begin by feeding the tubing through the canopy canvas. When you reach the opening in the middle at the top of the canvas, attach the bow strap over the aluminum tube. With the strap attached, continue to feed the tubing through the canvas.



Next, run the rope through the opening on the windshield, then through the grommet on the boat and then back through the opening on the windshield. Pull the rope and press down on the windshield until the opening is firmly over the grommet.



Connect the tubing using the push pins and then thread the long screw through the plate and then attach the brass insert. Push the screw through the carry handle and into the end of the rod on the canopy and secure it using the knurled nut.



Repeat these steps for all remaining grommets and then knot the other end of the rope.



Clip the two rear straps to the rope in the back of the boat and then pull the front strap forward to the rope in the bow of the boat and clip it as well. You can tighten the canopy straps so that the canopy canvas is tightly fitted



**3M Marine Cleaner (OPTIONAL)**

Cleans, shines, conditions and protects vinyl, rubber and plastic surfaces. Deep cleans dirt and grime, enhances appearance. Restores natural sheen, protects surfaces. Fresh lemon scent.



**303 Protectant (OPTIONAL)**

We all try to keep our boats clean, but there are some stains you just can't avoid. 3M Marine Cleaner & Restorer can remove the toughest stains from mud, bird droppings, oil, and many others.



**Paddling Life Vest (OPTIONAL)**

U.S.C.G approved! This type III PFD is great for all boating needs and gives you plenty of arm room in case you feel like rowing. Comes in various sizes with three adjustable buckles and adjustable nylon straps for a tight secure fit.



**Torqeedo 1003s (OPTIONAL)**

Weighing just 29.5 lbs with a short shaft of 23", the Torqeedo Travel 1003s delivers the performance of a 3HP gas motor and develops 4-5 times the power of traditional electric motors.



**Minn Kota Motors (OPTIONAL)**

Minn Kota Motors are the most reliable electric trolling motors on the market. These motors run off a 12v deep cycle marine battery (which is not included or sold by Sea Eagle).



**Portable Charger (OPTIONAL)**

Protect and preserve your battery life with this portable 10 AMP, Minn Kota battery charger. Features fully automatic 3-stage charging. Weighs 17 lbs. Input: 120V AC Output: DC 12V



**Battery Power Center (OPTIONAL)**

Allows trolling motor leads and charger leads to be connected without opening the box. Built-in battery meter includes two 12-volt accessory plugs and three manual reset circuit breakers. Fits group 24 and 27 size batteries.



**TIP:** Never connect the (+) and the (-) terminals of the battery together. Take care that no metal object can fall onto the battery and short the terminals. This would immediately lead to a short and utmost fire danger.

## Deflation & Storage

Although PVC material can become brittle in extremely cold temperatures, you can still safely store your Sea Eagle in them so long as you avoid dropping it and do not subject it to any sudden impacts.

If you're planning to leave your Sea Eagle outside, be sure to keep it raised up off of the ground. Its also a good idea to keep it covered so that it is not directly exposed to berries, leaves, rain, sunlight and other elements. Sea Eagles that are left in water will most likely have to be emptied from time to time.

Make sure that your boat is dry before storing your kayak for more than a few days, to remove any excess moisture that could cause unsightly mildew. Choose a cool, dry spot when storing in an enclosed area like basement, closet or garage.



Begin by deflating your Sea Eagle. To deflate, unscrew the valves from the base. Most of the air is immediately released.



Flip the boat over and fold the left side of the boat towards the middle and then fold the right side of the boat over the left side. Starting from the bow, roll up your Sea Eagle as tight as possible, pushing any excess air out the valves in the stern.



Continue to roll your Sea Eagle until it is nice and compact.

## Troubleshooting

If your boat is losing air it doesn't necessarily mean that its leaking. For instance a boat that is inflated late in the day with 90° air may cool 20° overnight. The cooler air will exert less pressure on the hull and the boat will appear softer the next morning. When there has been no variation in temperature and your boat is losing air then it is time to start looking for the leak.

The first thing you should do when looking for a leak is to actually look at the boat. Visually inspect the boat from a few feet away and if necessary, flip it over and closely check the outside. Any large leaks when your boat loses a considerable amount of air should be clearly visible.

Be sure to check the tightness of the one-way recessed valves as well and if necessary, tighten them with the valve wrench included in the orange repair kit canister.

If you have a rough idea of where your leak is but can't see it, you may want to try listening for it as you may be able to hear the air escaping and pinpoint the leak.

Other troubleshooting techniques you can try to locate the leak is to dowse/spray a mix of dishwashing liquid over suspicious areas. The leak may produce bubbles that will pinpoint the location of the leak.



### Crossed Threads

Make sure that both the inner valve and the outer cap are firmly screwed together. If threads are crossed on either item a slow leak could result. A good way to avoid this is to first turn the outer cap back 1/4 turn.

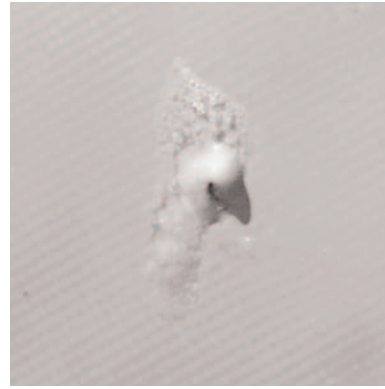


### Denting

Check the O-Ring base for dents. Denting can occur when the valve body lies across the O-Ring during storage. Heat the O-Ring with a hairdryer for about a minute or so until the dent eases itself out.



**Diaphragm Check**  
Check the black diaphragm at the bottom of the inner valve for grains between the diaphragm and the inner valve. Also check the threads on the inner valve, boat hull, and outer cap for any dirt or sand which might break the seal.



**Repair: Pinholes**  
Deflate your boat and thoroughly clean and dry the area that is to be repaired. For small punctures less than 1/8" apply a small drop of glue and allow 12 hours to dry.

## Repairs

Although our Sea Eagles are very rugged and tough, you may still experience the occasional puncture through use of your boat. Fortunately most repairs are fairly easy and only take a few minutes.

For an extensive repair please contact us directly for assistance or a quote to have it sent back and repaired at our facility. Repair fees start at \$75.00 and do not include return shipping charges.

For immediate use allow 30 minutes to dry and then inflate the compartment with the repair only 3/4 full and be sure to make a more permanent repair later.



**Repair Kit**  
All Sea Eagles come standard with a repair kit which includes two material patches and tubes of PVC based glue.



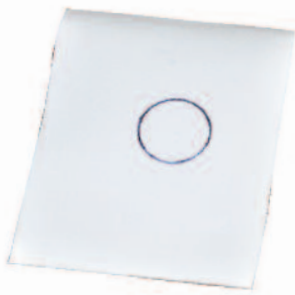
**Repair: Patching**  
Leaks that are larger than a pinhole can be patched. Most patches can be done in a few minutes, but we do offer a repair service for more complex jobs out of warranty.



**PVC Based Glue**  
For repairs on our boats you will need to use a PVC based glue. We suggest this 12 oz. can of Vyna Bond if you need more glue than what comes standard in the repair kit.



Once you have located the leak make sure you thoroughly clean the area surrounding the leak of any dirt or grime. After the area is clean and dry you can circle the area to make locating the leak easier throughout the repair process.



Using a ball point pen, trace the outline of your patch which should be large enough to overlap the damaged area by approximately 1/2". Angle the pen inward a bit so that the ink will be covered by the patch later.



**DO NOT USE D-Rings**  
Motormount Boats are manufactured with a completely different type of (stretchable) PVC material that can't accommodate the use or application of gluing on D-Rings.



Apply adhesive to the dull side of the patch and around the area to be repaired. Coat the affected area lightly but completely with glue.



**2-Part Adhesive**  
The adhesive that comes standard in your repair kit works for most repairs and installations, but for more detailed and extensive repair we recommend a 2-part PVC adhesive.



Place the patch on the damaged area and press down firmly. Let the glue sit for 2-4 minutes until it appears tacky. If glue does not hold, heat patch with a hair dryer.



**Methyl Ethyl Ketone**  
Methyl Ethyl Ketone or MEK is a solvent used to dissolve PVC based glue in case you need to remove a D-Ring, glue residue or patch. MEK is a strong solvent and can damage the material to the boat so use it very carefully and sparingly.



A temperature of approximately 160 degrees will activate the adhesive and from there you can press firmly on the patch until cooled. It is VERY IMPORTANT that you DO NOT use a hair dryer on an inflated boat.



MEK is very flammable, keep away from fire, lit cigarettes or sparks. When handling MEK we recommend wearing rubber gloves. Be sure to use MEK in a well ventilated area and heed all warnings from the manufacturer.

A temperature of 160° degrees will activate the adhesive and from there you can press firmly on the patch until cooled. DO NOT use a hair dryer on an inflated boat and NEVER use a heat gun on your boat.

To remove a patch with MEK, dip a cotton swab and apply it to the outer edges. The glue will start to dissolve and the patch will begin to separate from the boat. Continue to carefully apply MEK to the underneath of the patch and continue peeling it off. Once removed you can also clean off any residual glue with the MEK solvent.

To apply a new patch, allow approximately 30 seconds for the MEK to evaporate and apply the item to the boat.