

## Inflatable Floorboard (FBSTS10DS) Installation Sea Eagle Model STS10

Some STS10 owners want to replace the wood floorboards with the inflatable floorboard.



### What's needed for the floor to work:

Pump for kayaks and SUPs capable of 10 psi (hand or electric pump).

### Item List for Each Seating Position:

1 - Aluminum Frame (PSFRAME)

Hardware:

4 - 1/4 x 2" flat head bolt (PHILFLAT2)

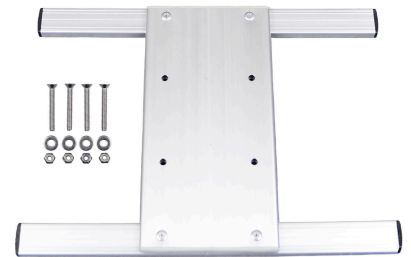
4 - 5/8" flat washer (WASHER58)

4 - locking nut (LOCKNUT)

Items from the Wood Floorboard Kit

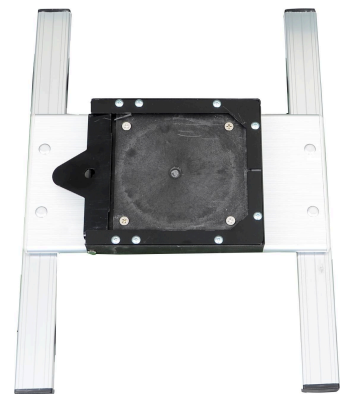
1 - Quick Release Seat Mount

1 - Swivel Seat with Pedestal



### Pre-Assembly

Transfer the quick release seat mounts from the wood floorboard to the aluminum frames. Longer, 2" flat head screws with nuts are needed, the 1-1/2" screws and T-nuts cannot be reused.

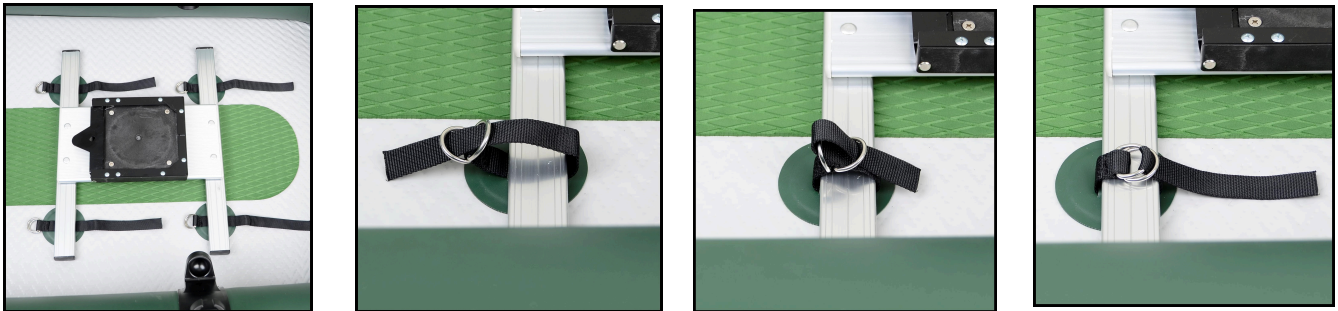


## Assembly

**Floor:** Inflate the boat and place the inflatable floor in the boat with the narrow part in the front (bow) and the wide part at the back (stern). Tuck the edge under the sides of the boat before inflating the floor.

Use a high pressure pump for SUPs, not the foot pump, to inflate the floor to approximately 10 psi. As you inflate the floor, make sure the edges stay tucked under the sides.

**Frame:** Mounting straps are pre-attached to the floor. Place the frame over the straps.



Strap the frame to the floor.

When the frame is secured with four straps, slide the seat with pedestal into the seat release.



## Deflation:

When done boating, remove the seats and frames and deflate the floor. It can be left in the boat, and folded up in place. If the boat will be stowed for a long period of time, remove the floor and dry everything before folding.

## Questions?

If you have any questions, please call Sea Eagle at 800-748-8066 or email [staff@seaeagle.com](mailto:staff@seaeagle.com) for help.