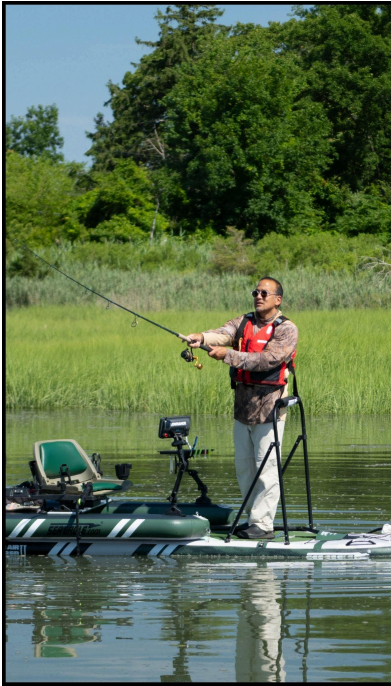


## Sea Eagle Universal Casting Bar Assembly Instructions



### What it Does

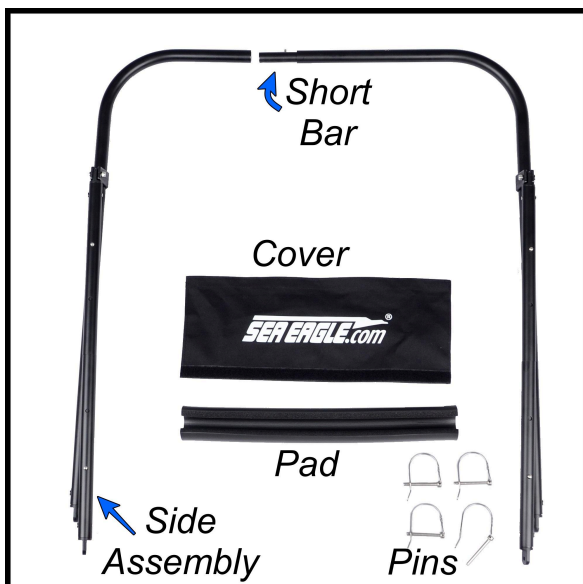
Sea Eagle's Universal CastingBar® fits the 2025 and newer Sea Eagle FastCat14, FastCat12, 285fpb, STS10, 437ps PaddleSki, FishSUP1210, 375fc, and FishSkiff16. It provides a sturdy handhold and secure support for standing and casting.

### Features

- constructed of anodized aluminum tubes with locking buttons
- soft foam leaning pad
- attaches without tools
- width is adjustable from 28" to 42"
- fore/aft pitch is adjustable
- folds down for storage and transport.

**Set Up Summary:** connect the side bar assemblies together with a top bar. Secure the loops at the end of the bars to grommets with locking pins. Attach the pad and cover.

**Wide boats:** exchange short top bar for a long bar. **The removable top bars do double-duty as part of the adjustable legs.**



### Included with the Universal Casting Bar

- 2 - Side Assemblies or "Legs"
- 1 - Short Top Bar (preinstalled)
- 2 - Long Top Bar (in leg tube)
- 1 - Pad with cover
- 4 - 2" Pin with locking bale

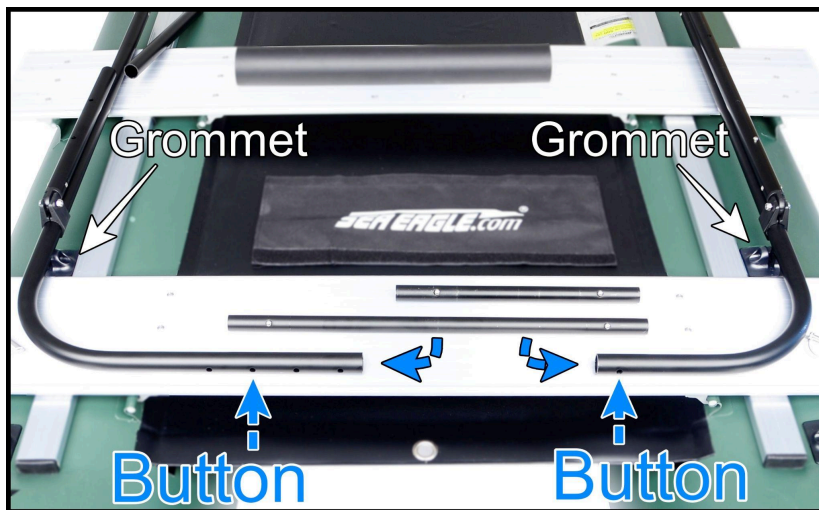
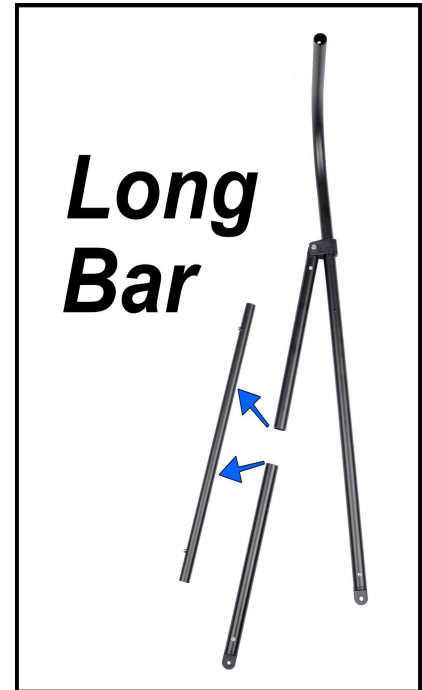
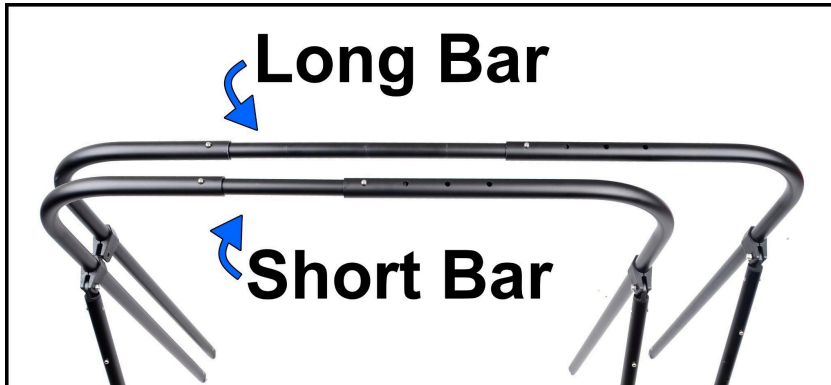
### Grommets

Needed: Four attachment grommets (GROMMET65) installed on the boat.



**Adjustable Width in 2" Increments**

- Short Bar: 28-34"
- Long Bar: 36-42"



**Decide How Wide**

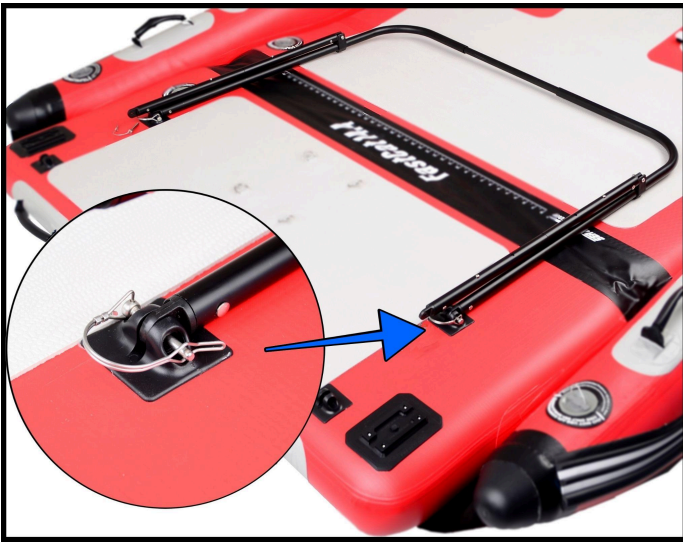
Lay the casting bar on the boat with the ends of the side bars close to the grommets. Shown here is the 375fc which needs the long top bar. Take the short top bar out, and replace it with a long bar from one of the legs.

**Narrow Boats:** 32 - 35" between grommets, use the preinstalled short bar.

- 285fpb
- 437PS
- FS1210
- FastCat12
- FSK16

**Wider Boats:** 37 - 44" between grommets, use a long bar.

- FastCat14
- 375FoldCat



**Attach to the Boat**

Lay Casting Bar over the grommets with the adjustable legs on top. Secure legs with pins.

Depending on your preference, the Casting Bar can be installed with the legs on top or bottom.



Pull the bar up by a leg and secure the legs with pins.



**Fore and Aft Adjustment**

Extend the legs to tilt the casting bar.

## Leg Extension

- with Short Bar: no adjustment
- with Long Bar: 27 - 35"



## Install Pad and Pad Cover

Insert the pad onto the top bar. Wrap the pad with the black canvas cover. From one end work toward the other end squeezing the pad until the velcro strips lock together.

## Buttons

Buttons can be difficult to depress all the way down in some cases. Use one of the attachment pins to fully depress buttons. Rinse buttons with fresh water after use in saltwater.

## Removing Casting Bar

Unlock the mounting pins and remove them from the grommets. Run the pins into the holes and lock the bales so pins don't get lost.

### ⚠ Caution:

- **Avoid capsizing.** Casting Bar is a hand hold device to steady yourself. If you lean so far to one side that the boat or board becomes unbalanced, it could tip over.
- **Avoid drowning.** Always wear a life jacket while on the water.

For video instructions:

<https://www.youtube.com/watch?v=v2ZyGcK2Qz8&t=101s> or scan QR code.



**Questions?** If you have any questions, please call Sea Eagle at 800-748-8066 or email [staff@seaeagle.com](mailto:staff@seaeagle.com) for help.