

3-IN-1 AIR PUMP



SEA EAGLE.com[®]

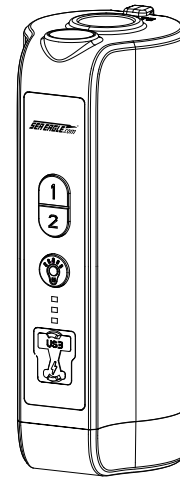
19 North Columbia Street
Port Jefferson, NY 11777
1-800-748-8066
staff@seaeagle.com

3-IN-1 AIR PUMP

Mini Electric pump 3-IN-1 AIR PUMP/ Flash Light

HT-451 Operation Instructions

Read the following instructions and warnings before use



3-IN-1 AIR PUMP

Contents

Warnings	1
Product diagram.....	2
How to use	
Opening mode of air pump	3
Inflation method	3
Extraction Deflation method	3
LED and SOS Lamp.....	4
USB output.....	4
Battery level prompt mode.....	4
Charging mode	4
Maintenance and storage	5
Other parameters.....	5



HT-451



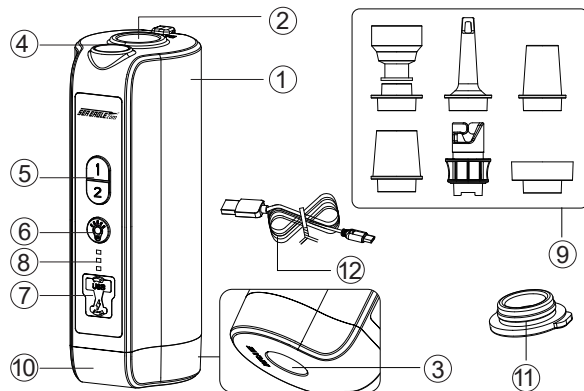
Maintenance and storage

1. When the air pump is stored, it is necessary to cover the waterproof plug at the air inlet and outlet to prevent foreign matters and water from entering the interior;
2. The air pump should be charged before long-term storage, and the product should be charged and discharged at least once after 5 months to ensure that the battery power is not completely exhausted.

Other parameters

Body size	Length * Width * Height 68*58*155mm
Battery parameters	7.4V 29600mWh lithium battery
Charging duration	About 4 hours
Charging input parameters	DC5V/2A
USB output parameters	DC5V/2A
Lighting endurance	The battery life is about 10 hours when the cold warm light is adjusted to the brightest level, and about 100 hours when the cold/warm light is adjusted to the minimum value.
Net weight	About 500g
Product material	ABS
Charging cable	Android Type charging cable

Product diagram



- ① Pump body
- ② Extraction port (Deflation)
- ③ Inflation port
- ④ Flashlight
- ⑤ Motor switch (inflation/extraction start switch)
- ⑥ Lamp switch (LED, SOS warning lamp switch)
- ⑦ USB port/Type-c charging port
- ⑧ Indicator lamp
- ⑨ Air nozzle
- ⑩ Light
- ⑪ Waterproof plug
- ⑫ Type-C charging cable

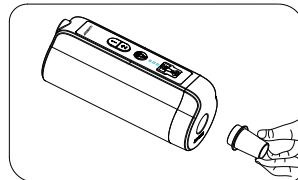
How to use

Opening mode of air pump

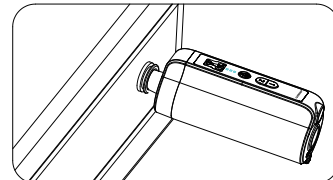
1. Double click the 1st gear of motor switch, the low-gear inflation/extraction function starts. Click the motor switch again, the motor is turned off. The air pressure in 1st gear is about 0.7psi.
2. Double click the 2nd gear of motor switch, the high-gear inflation/extraction function starts. Click the motor switch again, the motor is turned off; the maximum air pressure in 2nd gear can reach 1.8psi,

Inflation method

- Note: 1. Remove the silicone waterproof plug at the air inlet and outlet before using the air pump;
2. The air chamber valve should be open before inflating.



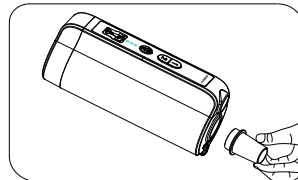
1. Select the appropriate air nozzle and connect the air nozzle to the air pump.



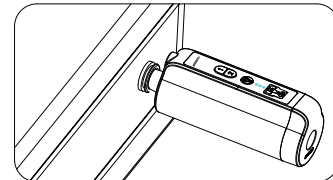
2. Insert the air pump into the air chamber inflation port; turn on the motor switch and start inflating.

Extraction Deflation method

- Note: The air chamber outlet valve should be fully opened before extracting.



1. Select the appropriate air nozzle and connect the air nozzle to the air pump.



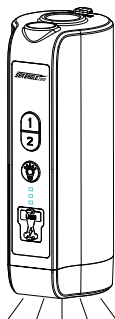
2. Insert the air pump into the air outlet of air chamber; turn on the motor switch and start extracting.



LED and SOS Lamp

1. Turn on the flashlight by double-clicking the lamp switch.
2. Click the lamp switch again to switch to warm light, with the default brightness of 50%. Long press the switch to adjust the brightness.
3. Click the lamp switch again to switch to cold light, with the default brightness of 50%. Long press the switch to adjust the brightness.
4. Click the lamp switch again to switch to cold and warm light on, with the default brightness of 50%. Long press the switch to adjust the brightness.
5. Click the lamp switch again to switch to SOS distress signal lamp.
6. Click the lamp switch again to shut down.

When cold light, warm light or cold and warm light mode is turned on, long press the lamp switch to carry out stepless dimming. When it is brightest or darkest, the light will flash once to indicate that the brightness has been adjusted to the highest or lowest.



USB output

USB interface can connect mobile phones to charge mobile phones and tablet computers.

Battery level prompt mode

When the battery is charged, the indicator lamp shows green; when the battery power is insufficient, the indicator lamp shows red; when the power is too low, it automatically shuts down.

Charging mode


When a power supply is plugged in from a Type-C cable(11), the air pump starts to charge, and the red indicator light is on.

When the battery is fully charged, the green indicator lamp is on, and the power indicator lamp turns off after removing the charger.

3-IN-1 AIR PUMP

⚠ Warnings

In order to avoid dangers, please read and follow all instructions carefully before using this product.

- ⚠ **Warning:** This product should not be drenched or immersed in water.
- ⚠ **Warning:** This product cannot be used in flammable and explosive environment.
- ⚠ **Warning:** Avoid high temperature, humidity, dust and direct sunlight.
- ⚠ **Warning:** Do not insert any foreign matter into the inflation port, the deflation port or the charging port.
- ⚠ **Warning:** When in use, it is strictly forbidden to face the inflation port and the exhaust port with eyes.
- ⚠ **Warning:** This equipment can be used at home, indoors and outdoors.
- ⚠ **Warning:** The battery in the air pump cannot be replaced.
- ⚠ **Warning:** Please use this equipment at ambient temperature not exceeding 40 °C.
- ⚠ **Warning:** Do not put this product into fire for fear of explosion, battery leakage or other dangers.
- ⚠ **Warning:** When not in use, turn off the power and store it properly, and keep it out of the reach of children.
- ⚠ **Warning:** This is a high-volume and low-pressure pump, which is used to inflate/deflate such items as inflatable beds and some boats. This air pump is not designed for continuous use.
- ⚠ **Warning:** When the air pump is used continuously for more than 5 minutes, cool it down for 10 minutes before continuing to use it.
- ⚠ **Warning:** The air pump is for recreational use only.
- ⚠ **Warning:** Children aged 8 or above, as well as persons with reduced physical, sensory or mental abilities or lack of experience and knowledge may use this equipment if they are supervised or instructed in the safe use of the equipment and are aware of the risks involved. Children are not allowed to play with this equipment.
- ⚠ **Warning:** During charging, the inflation function cannot be used, but LED lamps and USB can be used normally.
-  **Warning:** Do not treat this product as unclassified municipal waste. Waste shall be collected separately and treated specially.