

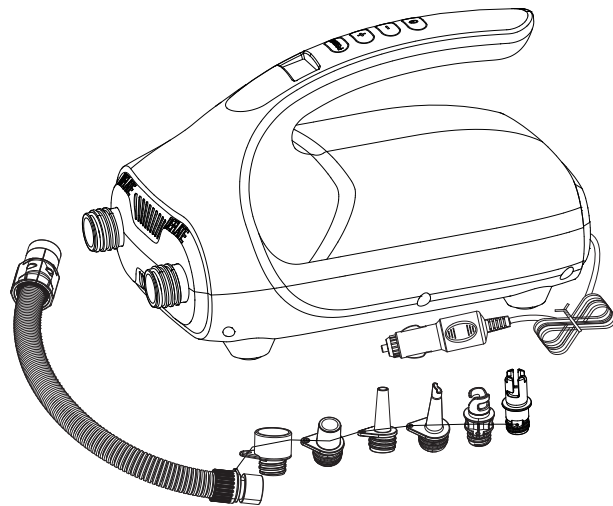


19 North Columbia Street  
Port Jefferson, NY 11777  
1-800-748-8066  
staff@seaeagle.com

## HANDY PUMP

### Intelligent DC Electric Pump

#### HT-782 Operation Instructions



Read the operation instructions carefully before using this product.

# BOAT & SUP ELECTRIC AIR PUMP

## Contents

I. Product Introduction.....	1
II. List of Accessories.....	1
III. Details of Accessories.....	1
IV. Safety Warnings.....	2
V. Inflation Operation.....	3-4
VI. Deflation Operation.....	4
VII. Precautions.....	4-5
VIII. Troubleshooting.....	5
IX. Maintenance and Storage.....	5

# BOAT & SUP ELECTRIC AIR PUMP

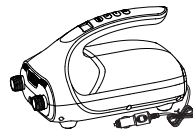

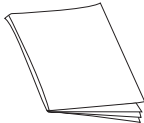
## I. Product Introduction

Thank you for purchasing SeaEagle product, HT-782 is an intelligent DC electric pump with the preset pressure LCD screen, which can be used for inflatable boats, SUP, etc. Thanks to the intelligent pressure system, if a pressure value is preset, when the pressure reaches the preset pressure value, the pump will automatically stop inflating.

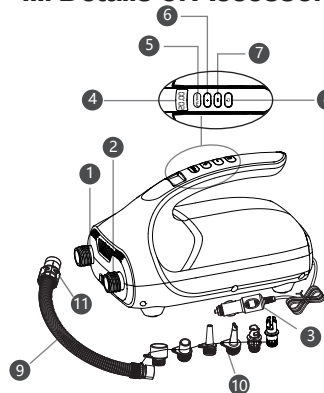
This product also can deflate for folding and storage.

## II. List of Accessories

Please make sure that the following accessories are in the box before using it, if any missing, please contact SeaEagle.

Air pump	Hose	Instruction Book
		

## III. Details of Accessories



①	Inflation inlet
②	Deflation outlet
③	DC plug
④	Pressure value LCD screen
⑤	Pressure unit toggle button
⑥	Pressurizing button
⑦	Decompressing button
⑧	On/off button
⑨	Hose
⑩	Valve Adapters
⑪	Hose Inlet/ Outlet connector



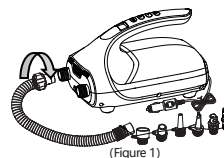
## IV. Safety Warnings

- ⚠ **Warning:** In order to reduce the risk of injury, please keep children away from pump. Always supervise children and incapacitated person contacting or using this air pump.
- ⚠ **Warning:** Children shall be kept away from this product and wire.
- ⚠ **Warning:** This appliance can be used by children and above and persons with reduced physical, sensory or mental capabilities or lack of experience and knowledge unless they supervised.
- ⚠ **Warning:** Before maintaining, repairing or adjusting this product, please first pull out the DC plug from the socket.
- ⚠ **Warning:** If the power wire is damaged, the pump must be replaced.
- ⚠ **Warning:** If you are standing in water or your hands are wet, do not handle the plug.
- ⚠ **Warning:** Before inflating, check the maximum pressure rating of the inflatable product, because the air chamber may be damaged by exceeding the maximum pressure.
- ⚠ **Warning:** Before using, check the 12v accessory socket to make sure that there is no rust or residue inside. The 12v accessory socket with poor electric conduction may cause overheating of the product or power source, which may damage the product.
- ⚠ **Warning:** The purpose of using this product is limited to the description in the instruction book.

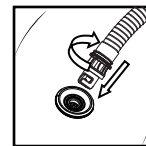


## V. Inflation Operation

- \* Connect the hose (9) Inlet/ Outlet connector (11) to the air pump inflation inlet(1), and twist clockwise to tighten it (Figure 1).
- \* For Sea Eagle inflatables, choose the hook-in style adapter. Place the thinnest milky-white silicon gasket on the adapter, remove any other gasket(Figure 1). Attach adapter to hose and turn it clockwise to tighten. Push adapter into valve and turn it clockwise to lock it in place(Figure 2).
- \* Plug the DC plug into a 12V DC socket.
- \* Press the pressure unit toggle button (PSI/BAR) to select the units you need.
- \* Press the pressurizing button (+) or decompressing button (-) to set the pressure value you need, with the range of the pressure value from 0 to 15PSI, (1PSI=0.0689BAR)
- \* After finishing the above steps, press the power switch button (⏻) to start to inflate.
- \* During the inflating process, you can press the pressurizing button (+) or decompressing button (-) to increase or decrease the pressure value, press the pressure unit toggle button (PSI/BAR) to switch the unit, and press the On/Off button (⏻) to stop.
- \* Press and hold the On/Off button for 3 seconds to directly start the high pressure pump.



(Figure 1)



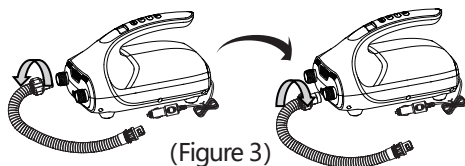
(Figure 2)

- \* When the pressure reaches the set value, the air pump will stop pumping automatically.
- \* After completing the inflation, pull out the DC plug from the 12V DC socket.
- \* After pulling out the DC plug, remove the hose from the pump and store it in its bag.

- \* Notice: The factory set pressure value of the air pump is 15PSI (15PSI=1.033BAR), and at the time of the first use, the set pressure to desired pressure.
- \* Notice: After powering on, if there is no operation within 2 minutes, the air pump will enter standby mode, the pump can be restarted by pressing the power switch button (○).

## VI. Deflation operation

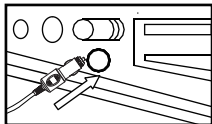
- \* Remove the hose from the inflation inlet, connect the hose connector (11) to the air pump deflation outlet (2), and twist clockwise to tighten it (Figure 3). Insert the valve adapter into the valve.
- \* Press on/ off button (○) to start deflation, air is removed, turn the power off to stop the deflation.



(Figure 3)

## VII. Precautions

- \* The power source must be the 12V DC (Figure 4).
- \* Do not block the Inflation inlet (1) and Deflation outlet (2), and ensure that the inflation inlet and deflation outlet remain clean.
- \* Observe the local waste treatment provisions.
- \* Don't use this product when the hose is damaged, and change the hose immediately.
- \* Don't make the air pump work for more than 20 minutes, because motor overheating may cause internal damage. Pump shall be fully cooled for 30 minutes after continuously working up to 20 minutes.
- \* Don't use this air pump if any part is damaged, and please (Figure 4) contact professional personnel to repair it.



- \* This product shall not be exposed to the rain or immersed in water.
- \* In order to prevent risk, the inflation inlet shall not be forward to face or body. Don't leave unattended while inflating.
- \* Start vehicle when using the product.

## VIII. Troubleshooting

Fault	Inspection	Solution
The air pump cannot be started normally.	<ol style="list-style-type: none"> <li>1. The power source is not plugged properly.</li> <li>2. The 12A fuse in DC plug is burnt out.</li> <li>3. Overheating or overload causes motor stop.</li> </ol>	<ol style="list-style-type: none"> <li>1. Make sure that the power wire is plugged in the 12V DC socket.</li> <li>2. Change the fuse.</li> <li>3. Cool the motor and restart it.</li> <li>4. If the problem cannot be solved, please contact local service agents or similar authorized personnel to change the product.</li> </ol>
The machine displays HOT	Check if the air pump is working too long and it is overheated.	30-minute cooling
Slow or abnormal inflation or deflation.	<ol style="list-style-type: none"> <li>1. Check whether the hose is blocked or cracked.</li> <li>2. The valve adapter is not sealing properly.</li> </ol>	<ol style="list-style-type: none"> <li>1. Replace cracked hose.</li> <li>2. Replace white gasket.</li> <li>3. If the problem cannot be solved, please contact local service agents or similar authorized personnel.</li> </ol>

## IX. Maintenance and Storage

- \* After use, pull out the DC plug from the socket.
- \* Properly store after being fully cooled.
- \* Do not expose to the rain or immersed in water.
- \* Please store it in a dry and ventilated place.