

SEA EAGLE[®].com



Sea Eagle[®] FoldCat[™]

375FC

Instruction & Owner's Manual
For video instructions visit SeaEagle.com/Instructions

Sea Eagle Boats Inc.
19 N. Columbia Street, Suite 1
Port Jefferson, NY 11777
1-800-748-8066

January 2017



SEA EAGLE WARRANTY & REGISTRATION

Congratulations on purchasing a Sea Eagle! With almost 50 years of experience in designing, selling and using these quality inflatables, we're confident that you are going to love your Sea Eagle and we're ready to proudly stand behind them.

Sea Eagle Warranty

All Sea Eagle products come standard with a 3 year warranty against manufacturing defects. The warranty begins the date that your product is delivered. Sea Eagle must inspect equipment in order to determine if there is a defect. In the event that an item must be shipped back to us, Sea Eagle will only reimburse the standard return shipping charge through FedEx, UPS, or U.S.P.S. at published shipping rates. Fees charged by retail shipping outlets, like The UPS Store, will not be reimbursed and you are responsible for handling and packing charges.

Sea Eagle will refuse delivery on packages without a valid return authorization number and will not be responsible for shipping or handling charges. To obtain a return authorization number, please contact Sea Eagle directly, unless you purchased from an authorized dealer/reseller in which case contact them for more information.

If you receive a damaged item, please call the shipping carrier to report the issue. Do not return damaged merchandise until it has been inspected by the carrier. Sea Eagle will be notified by the carrier when they have completed their inspection and if necessary, Sea Eagle will arrange for the repair or replacement of damaged merchandise.

See complete warranty details at SeaEagle.com/Warranty.

Decals, Stickers & Registration

Always contact your state boating authorities for information on boating registration and regulations. Most states require you to register your boat if you are using a motor.

Upon registration it may be required to provide the Manufacturer's Statement of Origin.

Purchases made through an authorized dealer or reseller may require for you to contact them directly in order to obtain this. You may be charged your own state sales tax if you were not charged sales tax at the time of purchase.

Registered boats generally require for the registration number to be applied to the boat. We do not recommend the use of decals or stickers as they tend to crack and peel over time with the repeated inflation and deflation of your Sea Eagle. Instead we suggest applying these numbers to a small piece of hard plastic or marine plywood and hanging it from your boat like a license plate if permitted by your state. Another method is to apply the numbers to the hull using either PVC based paint or permanent marker.

Contact Us

Unlike many other companies today we pride ourselves on answering the phone and helping you with any concerns, questions or special ordering needs that you may have!

Feel free to give us a call at 1-800-748-8066 and we will be happy to talk with you!
Our business hours are Monday to Friday from 9-5 (EST).

Sea Eagle Boats Inc.
19 N. Columbia Street, Suite 1
Port Jefferson NY 11777
1-800-748-8066
staff@seaeagle.com

Motoring

Your Sea Eagle FoldCat comes equipped with a motor mount that can be used with either an electric or gas motor. Because it is light weight, the FoldCat motors very well with small outboard motors. The National Marine Manufacturer's Association has rated the FoldCat for maximum capacity for both dry weight and horsepower. Under no circumstance should you equip with a motor that exceeds these capacities (whether they be for the dry weight or the horsepower or both). Not only can this result in damaging your Sea Eagle FoldCat, it will also void your Sea Eagle warranty.

Gas motors are measured in units of horsepower and are generally built with power and speed in mind. The FoldCat 375FC is rated for a maximum of 3HP up to 45 lbs. For the best performance with a FoldCat, we recommend using a 15" short shaft, although a longer shaft can be used in greater depths of water.

Traditional electric motors are measured in units of thrust (the pulling or pushing power of a motor) and are less powerful, but quieter on the water than gas motors. There is no direct correlation of thrust to horsepower although most consider traditional electric motors to be about a 1HP (which is more of a guess than an approximation). Both FoldCat models can use anything up to a 74 lb. thrust electric motor.

Advantages of having an electric motor over a gas is that they are lighter to transport and easier to maintain. In order to operate an electric motor you will need a 12V deep cycle marine battery. Other suggested accessories are a battery charger and a battery power center to house the battery itself.

Honda, Minn Kota, & Torqeedo products come with a manufacture warranty and are not covered by the Sea Eagle warranty or 180 day trial period. All warranty work is handled directly by the respective manufacturer and all sales on these products are final.

Rowing

You may be surprised at how easy it is to row your Sea Eagle FoldCat. You can row your FoldCat facing forward or backwards. When you row forwards, you face backwards. This means you will have a great view of where you have been, but almost no view of where you are going. Be sure to check over your shoulder frequently to avoid any obstacles or obstructions. Be aware of the conditions of the water you are rowing in.

You should be aware of any and all obstacles and dangers that you might encounter (i.e. buoys, docks, moored boats, motor boats, sail boats, waves, weather, lightning, rain, etc). Please note to give way to both motor boats and sail boats as they have the right of way.

If you are new to rowing, we suggest that you practice rowing for several hours near the shore before venturing out further onto open waters. Practice only makes perfect and ensures that you are comfortable in your boat in almost any weather conditions you may come across. Continually practice your rowing strokes, trying to make them as fluid and smooth as possible.

When pulling your oars through the water you should try to keep the blades fully immersed in the water, but as close to the surface as possible. This will give you greater rowing leverage. Even if you are motoring your Sea Eagle FoldCat, we always recommend having your oars on board in case of emergency or engine failure.

Safety

In a manual of this type it is impossible to give adequate space to the topic of water safety. For further information on boating safety, visit USCGBoating.org or enroll in a water safety course given by a local provider.

It is your responsibility to be aware of and comply with all relevant safety regulations. For all water recreation or sport you should have a reasonable swimming ability. Just as swimmers have a cardinal rule about not swimming alone, it is strongly advised that you should never go boating alone.

Boating Safety Tips

- Always wear a USCG approved PFD (life vest) at all times while on the water.
- Be aware of your local boating rules and regulations and abide by them accordingly.
- Check inflation levels each time before you go out and inflate your boat for a full 24 hours before undertaking long trips.
- DO NOT allow children to use Sea Eagle unsupervised.
- DO NOT consume alcohol while boating or operating a boat while under the influence of alcohol or drugs.
- DO NOT drag your Sea Eagle over rocks or gravel if it can be avoided.
- DO NOT exceed the certified maximum capacities of this boat under any circumstance.
- DO NOT go boating alone.
- DO NOT use compressors, co2 or compressed air for inflation, only use Sea Eagle recommended pumps.
- DO NOT use your Sea Eagle Boat as a personal flotation device as they are designed for leisure/recreation in mind.
- DO NOT sleep inside of your Sea Eagle while on the water.

Safety Equipment

The type of water conditions you are on should determine the type of safety equipment that you should have on board. For all types of boating we strongly recommend that every passenger wear a USCG approved PFD (personal flotation device) like a life vest. In most places this is a requirement by law, but from our point of view it is also an exercise of good judgment to have a PFD for all passengers. Other important items to consider for all types of boating...

Drinking Water & Snacks: Kayaking is a physical activity that can work up both a thirst and a sweat and especially on a hot or warm day it is a good idea to have drinking water readily available to you to prevent dehydration. Bring a good amount of water for all passengers as you want to avoid drinking the water you're kayaking in which may be full of contaminants.

Extra Clothes/Layers: You never know when the weather can change and it's a good idea to come prepared with extra clothing. If you have a dry (waterproof) bag than we recommend storing them inside so they're not damp in case of emergency.

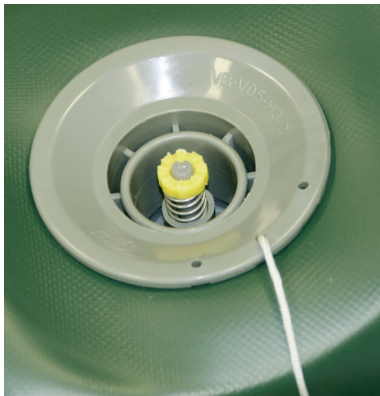
First Aid-Kit: The contents of the kit may vary depending upon your preferences, but make sure to carry a kit that reflects the possible dangers for the conditions you are in.

Foot Pump/Repair Kit: Although our boats are both durable and rugged, it may be possible that you need to make a repair while on the water in which case you'll need the repair kit and the foot pump to re-inflate the boat. If this is your first repair, you may also want to bring this instruction manual with you.

Sun/Rain Protection: A hat can protect both your face and head from the rain or sun. You may also want to carry sunscreen with you as both the sun and the sun's reflection from the water can do serious damage to your skin. If you are out for prolonged periods of time you may need to reapply sunscreen as needed.

Whistle: Having a whistle readily available to you in case of emergency is a great way to attract the attention of others if assistance is needed.

INFLATION, VALVES & PUMPS



Recessed Air Valves

Remove the cap and press and turn the valve stem counterclockwise so that the stem is in the UP position. Only when the stem is in the up position the valve will retain air. Turning the stem clockwise and down will put the valve in the position for deflation.



BTP Turbo (OPTIONAL)

The BTP Turbo electric pump comes complete with a nylon shoulder carry bag, 12V DC power supply, hose and adapters.

A-41 Foot Pump

The A-41 Foot Pump is a high capacity pump made of durable ABS plastic. To use simply press the two halves of the foot pump together and connect the hose to the inflation port marked OUT. Insert the valve adapter at the other end of the hose.



Included are a cluster of seven valve adapters, with raised numbers on each arm of the cluster. The adapter marked number 1 is the only adapter needed for your Sea Eagle.

Recessed Adapter

The recessed valve adapter is located inside of the orange repair kit canister. Insert the ribbed end of the valve adapter into the hose on the foot pump. This valve adapter is not compatible for use with electric pumps.



Take adapter number 1 from the cluster and firmly push it into the grey tube that is already connected to the end of the hose. To ensure that the adapter is on as tight as possible, push it past the raised ring that is inside of the adapter.



Make sure that the valve stem is in the up position and insert the valve adapter into the valve and turn clockwise to lock into position. Once the desired pressure is reached you should feel a strong resistance on the foot pump.



Connect the other end of the hose to the red inflation port at the top of the pump, located near the ON and OFF buttons.

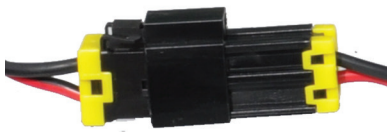


Adjust the pressure dial to read 3.2 PSI which is the operating pressure of your Sea Eagle. PSI is marked in red on the dial. Never turn the dial when the device is under pressure as this will immediately cause the instrument to break.



Warning:

Air compressors that are designed for other uses like tire inflation (usually around 50 PSI) can easily harm your Sea Eagle which works at a much lower pressure of 3.2 PSI. For this reason we recommend only using Sea Eagle pumps.



Connect the cord at the end of the power supply into the end of the cord attached to the pump.

ASSEMBLY & INFLATION



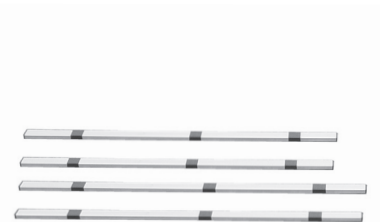
Connect the Turbo Pump to a 12V battery (car or marine) using the alligator clips at the end of the extension cord. Connect the red clip to the positive pole and the black clip to the negative pole.



Select a flat space that is free of any sharp objects and unroll the boat hull so that it is laid out. Please note that the aluminum floorboards have been pre-installed, but can be adjusted if necessary.



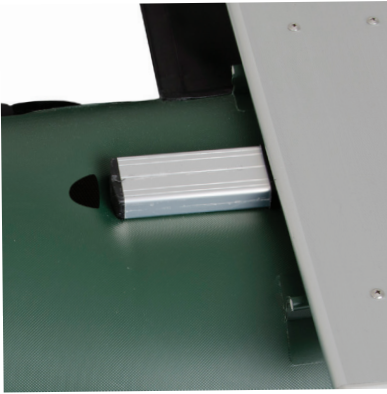
Press the ON button to begin inflation. The pump operates in two stages which can be identified by the noise of the turbine at the start, followed by the piston. The pump automatically stops once the pressure is reached.



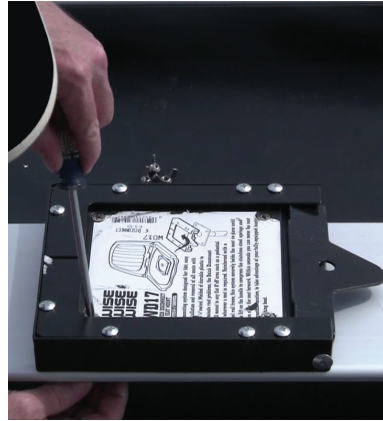
Stabilizer Underbars

Each FoldCat comes with aluminum stabilizer underbars. From the bow, slide one underbar under both the first and second floorboards. It does not matter which is at the front or back, as long as each pontoon has 1 long and 1 short bar.

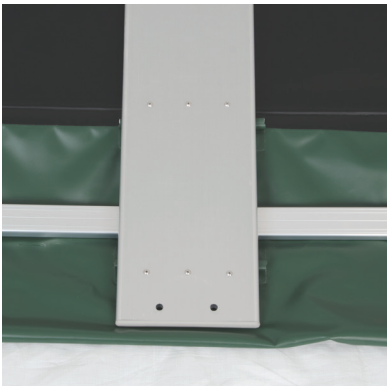
ASSEMBLY & INFLATION



Align the ends of the underbars in line with the triangular markings on each pontoon.



Position the mount over the pre-drilled holes designated for it and bolt the mount to the floorboard using the bolts and wing nuts.



When properly aligned, the underbars should line up underneath the center floorboard. Once they are in place, finish inflating the boat to full capacity.



Now slide base of the swivel seat (or base of the pedestal if you are using it as shown) into the mounts. Make sure that the spring loaded lever mechanism locks into place.



Swivel Seat
The 375FC has two basic seating positions with one at the rear and the other at the front.



Pedestal (OPTIONAL)
The pedestal is included in several FoldCat boat packages and includes four 1/2" bolts and four wingnuts. The 375FC can be fitted with up to two pedestals.

NOTE: Make sure that all hardware is secured tightly before every use.



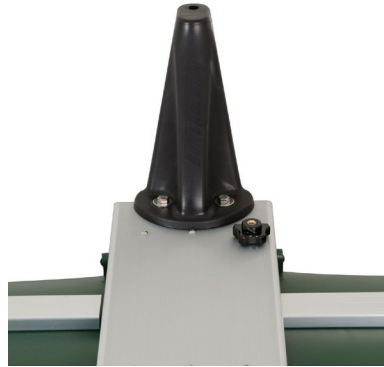
Quick release-a-seat mount comes with four bolts and four wing nuts. You'll need a Phillips head screwdriver (not included) to complete installation. The mount can remain attached when being folded for storage and is a one-time assembly.



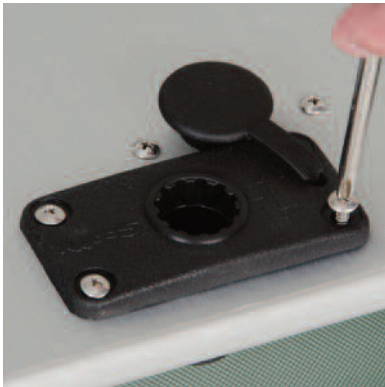
Bolt the upper end of the pedestal directly to the bottom of the swivel seat. Slide the other end of the pedestal into the release-a-seat and check to make sure that the spring loaded lever mechanism is locked.



Scotty Rod Holder
 Holds a bait caster reel in a cushioned cradle. Slot in the front allows for a spinning reel to be securely held in place. Includes side/deck mount. You will need a Phillips Head screwdriver (not included).



Bolt the raised oarlock bases at both ends of the aluminum bench through the pre-drilled 3/8" holes (2 at each end) using knurled nuts



Begin by installing the deck mount onto the bases. Be sure the "logo" on the mount reads upright when looking from inboard before securing the mount with the provided screws.



Slide the oarlock pin over the shaft of the oars, snap the oars shafts together and then insert the oarlock pin into the top of the oarlock. Tighten the clamp with the wingnut.



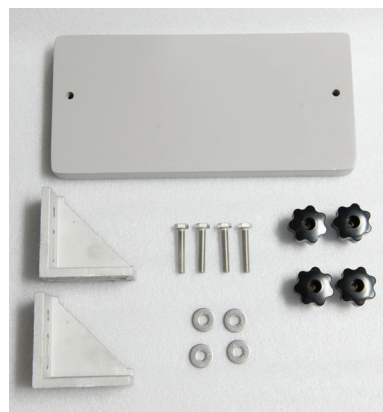
Next, install the rod holder into the base by pushing the post straight down into the mount. Line up the notch at the base of the rod holder with the key in the mount and insert it firmly into place. The rod holder can be rotated in its base by lifting and turning.



Once the oar pins are inserted place, lock them in place using the slide rings as shown.



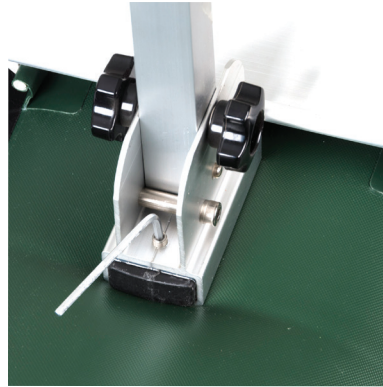
Oars & Oarlocks
 Each oarlock includes one oarlock pin, two bolts, two knurled knobs and two washers. First, attach the oarlock to the middle floorboard.



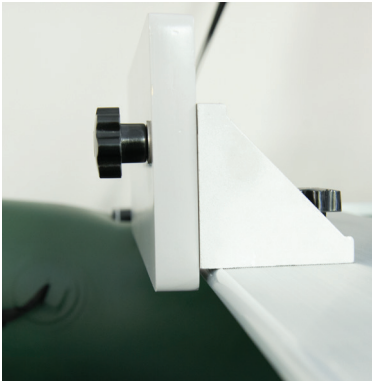
375FC Motormount
 Includes a motor mount block, two brackets, four bolts, knurled knobs and washers.



Secure the brackets to the motor mount block using one set of bolts. Orient the block so it hangs about 1/2" below the floorboard. Then use the remaining bolts to secure the mount to the floorboard.



Before attaching the casting bar to your boat, make sure that the FoldCat's pontoons are partially deflated. Insert the upright bases over the underbars in the bow and tighten the set screws at the base using the hex key.



To prevent cavitation when using a short shaft gas motor. The completed setup should hang slightly below the floorboard, as shown. Tighten the knurled nuts and bolts before securing a motor.



Casting Bar (OPTIONAL)

Adds safe and secure support for stand-up casting and doubles as a convenient hand-hold while stepping aboard. Includes crossbar with padded cover, two upright leg bases, and two 4mm hex keys (one spare).



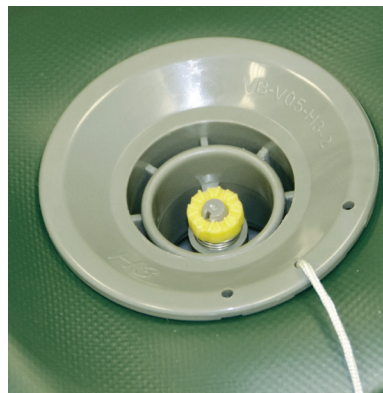
Insert the uprights into the crossbar. The height of the casting bar can be adjusted to one of three positions using the pre-drilled holes on the uprights.

DEFLATION & STORAGE

Although PVC material can become brittle in extremely cold temperatures, you can still safely store your Sea Eagle in them so long as you avoid dropping it and do not subject it to any sudden impacts.

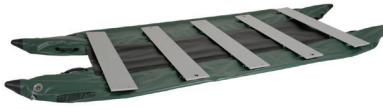
If you're planning to leave your Sea Eagle outside, be sure to keep it raised up off of the ground. Its also a good idea to keep it covered so that it is not directly exposed to berries, leaves, rain, sunlight and other elements. Sea Eagles that are left in water will most likely have to be emptied from time to time.

Make sure that your boat is dry before storing your FoldCat for more than a few days, to remove any excess moisture that could cause unsightly mildew. Choose a cool, dry spot when storing in an enclosed area like basement, closet or garage. Before you begin the deflation process, remove the seats, rod holders, casting bar and motor mount.



To deflate, remove the cap and press the valve stem down and clockwise into the open position. Release around 50-75% of the air from each chamber before fully deflating. Leave the valve open so excess air can be pushed out as you rollup the boat.

DEFLATION & STORAGE



As you deflate, it can be helpful to push the pontoons under the floorboards.



Start by folding the pontoon ends toward the middle. Roll the boat forward pushing any excess air out of the boat as you go along. When you're finished, tuck the bow ends neatly underneath.



Place the hull at the center of the opened boat bag and wrap the boat with the narrow flaps first. Lash down with the nylon straps to secure and repeat this process with the wide flaps and nylon straps.

TROUBLESHOOTING

If your boat is losing air it doesn't necessarily mean that its leaking. For instance a boat that is inflated late in the day with 90° air may cool 20° overnight. The cooler air will exert less pressure on the hull and the boat will appear softer the next morning.

When there has been no variation in temperature and your boat is losing air then it is time to start looking for the leak.

The first thing you should do when looking for a leak is to actually look at the boat. Visually inspect the boat from a few feet away and if necessary, flip it over and closely check the outside. Any large leaks when your boat loses a considerable amount of air should be clearly visible.

Be sure to check the tightness of the one-way recessed valves as well and if necessary, tighten them with the valve wrench included in the orange repair kit canister.

If you have a rough idea of where your leak is but can't see it, you may want to try listening for it as you may be able to hear the air escaping and pinpoint the leak.

Other troubleshooting techniques you can try to locate the leak is to dowse/spray a mix of dishwashing liquid over suspicious areas. The leak may produce bubbles that will pinpoint the location of the leak.

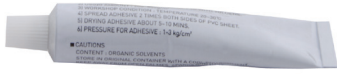
Although our Sea Eagles are very rugged and tough, you may still experience the occasional puncture through use of your boat. Fortunately most repairs are fairly easy and only take a few minutes.

For an extensive repair please contact us directly for assistance or a quote to have it sent back and repaired at our facility. Repair fees start at \$75.00 and do not include return shipping charges.

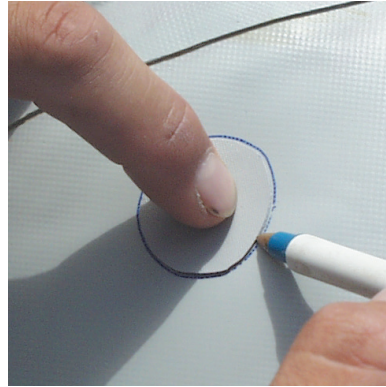
Repair Kit

All Sea Eagles come standard with this repair kit which includes both PVC patches and PVC glue. Repair kits that are included in boat package purchases also include the recessed valve adapter and valve wrench.

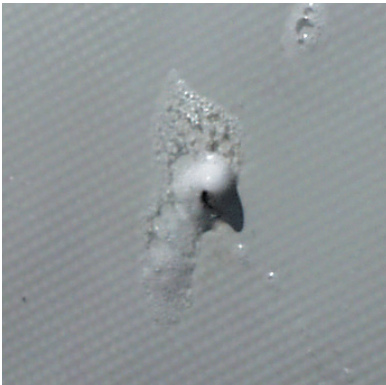




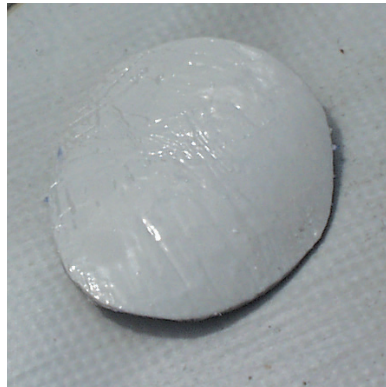
PVC Based Glue
For repairs on our boats you will need to use a PVC based glue.



Using a pen, trace the outline of your patch which should be large enough to overlap the damaged area by approximately 1/2". Angle the pencil inward a bit so that the ink will be covered by the patch later.



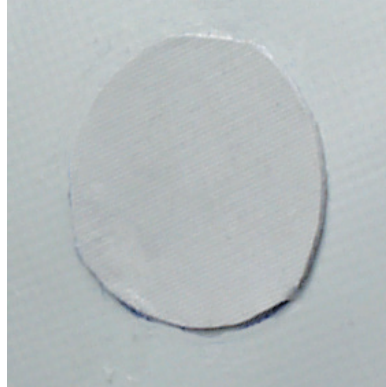
Repair: Pinholes
Deflate your boat and thoroughly clean and dry the area that is to be repaired. For small punctures less than 1/8" apply a small drop of glue and allow 12 hours to dry.



Apply adhesive to the dull side of the patch and around the area to be repaired. Coat the affected area lightly but completely with glue. If available, heat the glued surfaces with a hair dryer.



For immediate use allow 30 minutes to dry and then inflate the compartment with the repair only 3/4 full and be sure to make a more permanent repair later.



Place the patch on the damaged area and then press down firmly. Allow to cure for at least 24 hours.



Repair: Patching
Leaks larger than a pinhole can be patched. Most patches can be done in a few minutes, but we do offer a repair service for more complex jobs out of warranty.

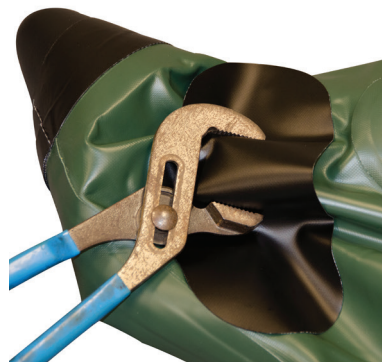


A temperature of 160° degrees will activate the adhesive. **NEVER** use a heat gun on your boat.

TIP: Check our website at SeaEagle.com/Instructions for a demonstrational video on this process.

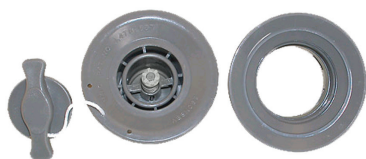


2-Part Adhesive
The adhesive that comes standard in your repair kit works for most repairs and installations, but for more detailed and extensive repair we recommend a 2-part PVC adhesive.



Place the material in the jaws of the channel lock pliers to protect the hull material. Once the body of is unscrewed from the base, pull the body from the opening and insert the replacement base. The opening is very tight, so you may have to pull on it hard.

Valve Replacement
DO NOT change out the valve unless you are sure it is broken. In most cases the valve will not leak. Because the base of the valve is built into the boat it cannot be replaced without cutting the chamber open.



Suggested tools include channel lock pliers, valve wrench (included with your repair kit) and piece of repair material (also found in the repair kit).

OPTIONAL ACCESSORIES



Personal Flotation Devices (OPTIONAL)
U.S.C.G. approved. Life jackets, paddling vest, PFD Belts available in various sizes.



3M Marine Cleaner (OPTIONAL)
We all try to keep our boats clean, but there are some stains you just can't avoid. 3M Marine Cleaner & Restorer can remove the toughest stains from mud, bird droppings, oil, and many others.



Inflate the chamber to full pressure if possible and loosen with the valve wrench by turning it counterclockwise. Deflate the chamber and unscrew the valve body from the base.



303 Protectant (OPTIONAL)
Extend the life of your Sea Eagle boat with 303 Protectant. Spray on every 30-45 days to improve resistance to UV, chemical and many other types of harmful exposure. 16oz.



Honda BF2.3 Long Shaft Gas Motor (OPTIONAL)

One of the world's lightest four-stroke outboards. The Honda BF2.3 is so light, it rivals many two-stroke 2HP engines and electric motors, without the battery. While still maintaining Honda's reliable, efficient 4-stroke design!



Battery Power Center (OPTIONAL)

Allows trolling motor leads and charger leads to be connected without opening the box. Built-in battery meter includes two 12-volt accessory plugs and three manual reset circuit breakers. Fits group 24 and 27 size batteries.



Torqeedo Travel 1003s (OPTIONAL)

Delivering the power and performance of a 3HP gas motor, the Torqeedo Travel weighs just 29.5 lbs. Please specify motor before ordering as the 375FC takes the 1003s (short shaft) model.



TIP: Never connect the (+) and the (-) terminals of the battery together. Take care that no metal object can fall onto the battery and short the terminals. This would immediately lead to a short and utmost fire danger.



Minn Kota Motors (OPTIONAL)

Minn Kota Motors are the most reliable electric trolling motors on the market. These motors run off a 12v deep cycle marine battery (which is not included or sold by Sea Eagle)

Contact Us

Unlike many other companies today we pride ourselves on answering the phone and helping you with any concerns, questions or special ordering needs that you may have! Feel free to give us a call at **1-800-748-8066** and we will be happy to talk with you! Our business hours are Monday to Friday from 9AM to 5PM, EST.

Portable Charger (OPTIONAL)

Protect and preserve your battery life with this portable 10 AMP, Minn Kota battery charger. Features fully automatic 3-stage charging. Weighs 17 lbs. Input: 120V AC Output: DC 12V



Sea Eagle Boats Inc.

19 N. Columbia Street, Suite 1
Port Jefferson NY 11777

631-473-7308

1-800-748-8066

staff@seaeagle.com