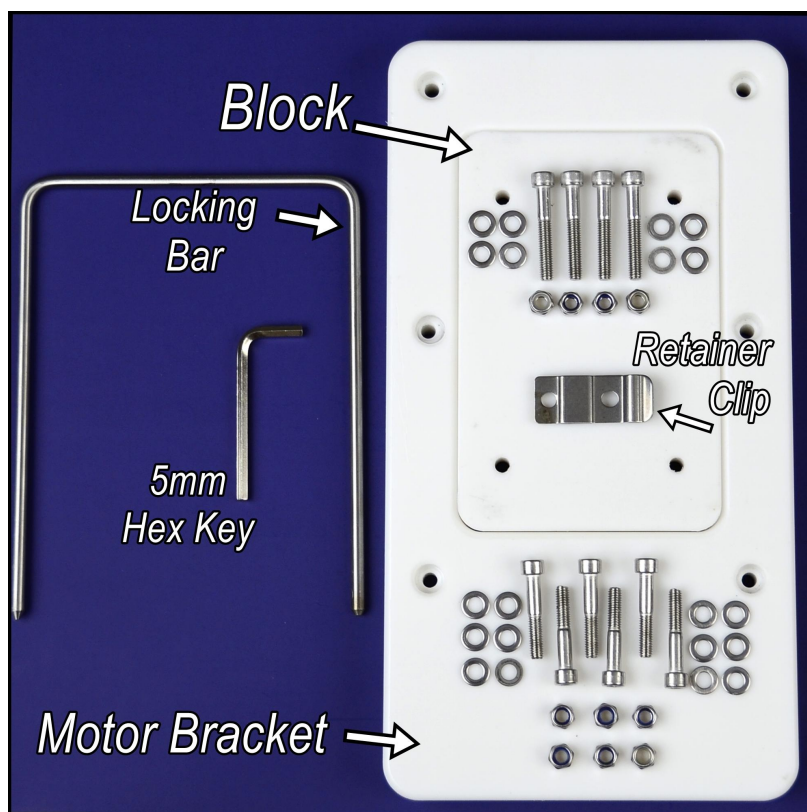


## Motor Mount Assembly Instructions for Bow Mount Trolling Motor with OPTIONAL Quick Release (MMFSK16)

06/23

These instructions are for mounting Bow Mount Quick Release Bracket to a Sea Eagle FishSkiff16 (FSK16) trolling motor mount and attaching a bow mount motor.

The motor mount hole pattern fit the WaterSnake quick release or Minn Kota RTA-17 and MKA-21.



### **Optional Quick Release**

**Block** (attaches to aluminum board)

#### **Block Hardware**

- 4 - M6 x 40mm (1-9/16") socket head screws (in board bag)
- 8 - 1/2" x 1/4" flat washers
- 4 - locking nuts
- (4 - 50mm screws not needed for FSK)

#### **Locking Bar and Retainer Clip**

**Motor Bracket** (attaches to motor)

#### **Motor Bracket Hardware**

- 6 - M6 x 35mm socket head screws
- 12 - 1/2" x 1/4" flat washers
- 6 - locking nuts

Not included:

**Tools needed:** Philips screwdriver, 10mm or adjustable wrench

### **MMFSK Aluminum Motor Mount Board**





## Block to Motor Mount Board

Attach quick release block to the aluminum board using M6 x 40 mm (1-9/16") socket-head screws, washers and locking nuts.



Important! Block has tapered sides, install so that block and base can slide together.

Caution!: Puncture hazard. Do not use screws longer than 40mm to attach block to aluminum motor mount board.



## Motor Bracket

Attach Quick Release Bracket to motor. This is a brief summary of this step. For more complete instructions refer to video instructions "Watersnake-How to Attach an Electric Motor Quick Release Bracket" on YouTube, or to the included instruction manual.

Remove side covers from motor.

Place locking clip on left side when looking at the motor upside down.

Important! Inside walls of bracket are tapered so block and base can slide together. Wide side must be down to slide into base. Note wide part of base is towards head, do not cover where motor swings

Caution!: Locknut should be just **snug**. Do not over tighten! Screwhead and washer will pull through nylon base.

Use 35mm screws, washers and locknuts.

Set motor aside and attach aluminum board to boat.



## Secure Motor Mount Board to FSK



Near the bow (front) of the boat are four D-rings (two on each side) for holding the aluminum board to the boat.

Insert large washer through each bolt. Insert each bolt through a D-ring so it stands upward.

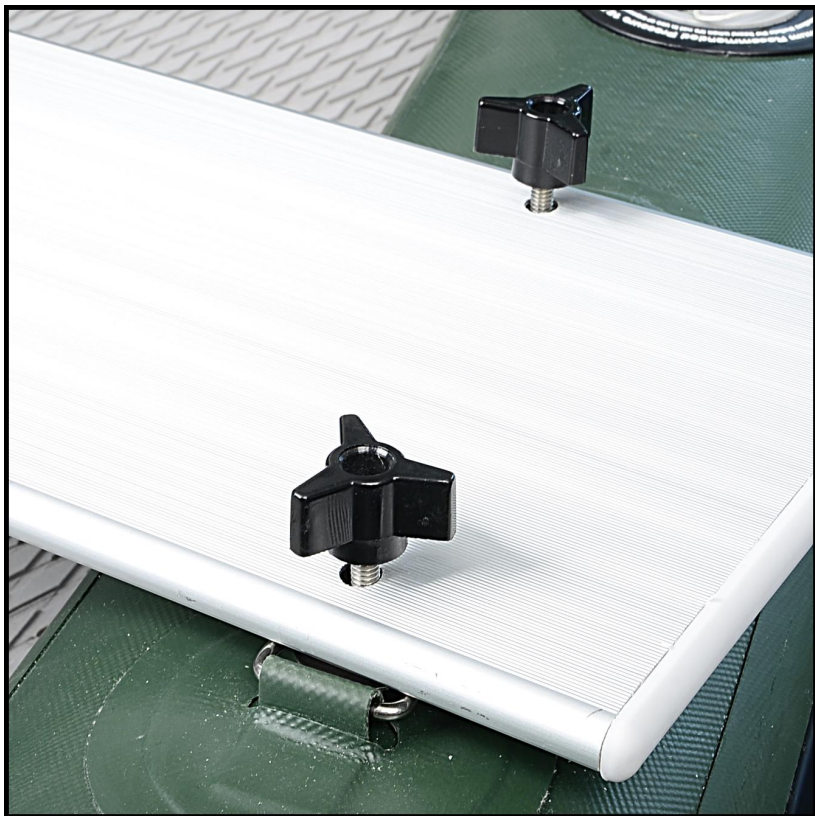


### Board Attachment Hardware

- 4 1/4 - 20 x 1 1/4" Philips Head Screws
- 4 5/16 x 1 1/4" Flat Washer
- 4 3-Arm Knobs

Place board over the screws on one side of boat and work bolts through the holes.

Start threading knobs onto the screws but do not tighten until screws are worked though the holes on the other end of the board.





Each FSK16 is hand made so D-ring spacing for each boat is a little different. You may have to push the board back and forth to get the last two bolts through their holes.



#### **Motor To Quick Release Base**

Place motor on mounting base. Slide locking bar all the way in until it engages locking clip.

Connect motor to foot control and battery.

The locking tab has a hole for a padlock.



