

SEA EAGLE.com®



Sport Kayaks

SE-330 & SE-370

Instruction & Owner's Manual

For video instructions visit SeaEagle.com/Instructions

Sea Eagle Boats Inc.
19 N. Columbia Street, Suite 1
Port Jefferson, NY 11777
1-800-748-8066

January 2012

Sea Eagle Guarantee

Congratulations on purchasing a Sea Eagle! With over 40 years of experience in designing, selling and using these quality inflatables, we're confident that you are going to love your Sea Eagle and we're ready to proudly stand behind them.

Sea Eagle Warranty

All Sea Eagle products come standard with a 3 year warranty against any manufacturing defect that begins the date that your product is delivered. Sea Eagle will refuse delivery on all packages without a valid return authorization number and will not be responsible for the shipping or handling charges. To obtain a return authorization number, please contact Sea Eagle directly unless you purchased from an authorized dealer/reseller in which case you should contact them for more information.

Sea Eagle must inspect equipment in order to determine if there is a defect. In the event that an item must be shipped back to us for inspection, Sea Eagle will only reimburse the standard return shipping charge through FedEx, UPS or the U.S. Post Office at published shipping rates. Retail shipping outlets like The UPS Store will not be reimbursed and you will be responsible for handling and packing charges.

The Sea Eagle warranty does not apply to products that are manufactured by Minn Kota or Torqeedo. These products are covered by their own, respective warranties. Please refer to the manufacturer's warranty of each product for details.

If you received an item damaged, please call the shipping carrier to report damaged merchandise. Do not return damaged merchandise until it has been inspected by the carrier. Sea Eagle will be notified by the carrier when they have completed their inspection and if necessary, Sea Eagle will arrange for the repair or replacement of damaged merchandise.

Decals, Stickers & Registration

Always contact your state boating authorities for information on boating registration and regulations. Most states require you to register your boat if you are using a motor.*

Upon registration it may be required to provide the Manufacturer's Statement of Origin.

Purchases made through an authorized dealer or reseller may require for you to contact them directly in order to obtain this. You may be charged your own state sales tax if you were not charged sales tax at the time of purchase.

Registered boats generally require for the registration number to be applied to the boat. We do not recommend the use of decals or stickers as they tend to crack and peel over time with the repeated inflation and deflation of your Sea Eagle. Instead we suggest applying these numbers to a small piece of hard plastic or marine plywood and hanging it from your boat like a license plate if permitted by your state. Another method is to apply the numbers to the hull using either PVC based paint or permanent marker.

**** Please note that our Sea Eagle Explorer Kayaks, FastTrack Kayaks, Sport Kayaks and LB-11 LongBoard are not rated for use with a motor.***

Contact Us

Unlike many other companies today we pride ourselves on answering the phone and helping you with any concerns, questions or special ordering needs that you may have!

Feel free to give us a call at 1-800-748-8066 and we will be happy to talk with you!
Our business hours are Monday to Friday from 9-5 (EST).

Sea Eagle Boats Inc.
19 N. Columbia Street, Suite 1
Port Jefferson NY 11777
1-800-748-8066
staff@seaeagle.com

Operating Your Sea Eagle

Lake & Stream Paddling

There are two very important points to consider before venturing out into calm, flat-water found in lakes and streams.

First, install your skeg underneath your kayak at the stern. The skeg will give you greater directional stability by reducing the natural yaw of the kayak. Yaw is the tendency of the back of the boat to move in a zigzag pattern. Second, make sure that your drain valves are closed and tightened properly to ensure that you have a dry trip. If the drain valves are left open in these conditions water will come through them and fill the kayak making it harder to maneuver and getting you and your gear wet in the process.

If you're new to paddling, start off slowly and hold your paddle out in front of you with your arms as straight as possible. Keep your eyes up and focused on the horizon and as the kayak begins to pick up speed it will maintain a true heading. If you dig in too hard at first the kayak will tend to yaw in the water. When you're paddling with a partner (tandem), try and coordinate your strokes so that you're both paddling in unison. If you start to paddle out of unison, simply stop and start again. With practice you will learn to paddle straight and reasonably fast and comfortably.

Ocean & Sea Kayaking

If you are not familiar with the ocean than take the appropriate care such as always kayaking within the range of an active lifeguard station and NEVER going into ocean waves that are rougher than you can handle. Do not lose sight of oncoming waves and DO NOT exhaust yourself in the ocean! It is always better to end the day early and safe than push your luck when you're tired.

Sailing

With the addition of our Sea Eagle QuikSail (sold separately), you can also turn your Sea Eagle Kayak into a one of a kind sailing vessel that sets up in just less than one minute. Kayak sailing enhances the paddling experience and is great for touring and exploring. When sailing it is recommended to paddle up wind of your starting point and to sail downwind for the final leg of your journey. The QuikSail can also be used as a handheld sail utilizing the handles located on each side.

You can adjust the position of the sail to the left or right to tack downwind by either pushing against the legs of the frame with your feet, or by pulling the frame at the handles with your hands. Use your paddle to guide and steer your kayak.

Whitewater Rapids

Kayaking in whitewater can be a very challenging and rewarding experience, however it can also be very dangerous for those who do not respect the power of fast moving water. It is our recommendation that anyone partaking in whitewater activities should be certain they are a strong swimmer and also enroll in one of the excellent water safety course provided by your local Auxiliary Coast Guard or Power Squadron.

There are six classes of whitewater difficulty ranging from class I (easy) to class VI (extremely dangerous). Sea Eagle Sport Kayaks are rated for use in up to class III (intermediate) whitewater. Please note that class III rapids should not be attempted by beginners as the conditions can get dangerous if you are not experienced.

It is very important to learn as much about a river as you can before you go down it and be prepared and ready to deal with any changing conditions or dangers that might arise. When using your Sea Eagle in whitewater conditions it is important to make sure that the drain valves are opened before venturing out to ensure that any water taken on can be released through the drain valve.

In addition to the equipment listed in this manual's **Safety** section, we strongly recommend the use of a helmet, gloves and rescue throw lines/ropes when partaking in whitewater activities.

A great source of background information for the topic of whitewater as well as various paddling techniques is Cecil Kuhne's Inflatable Kayaking (ISBN 0-8117-2810-2). We strongly recommend this and other related reading materials to better educate yourself with whitewater kayaking.

Safety

In a manual of this type it is impossible to give adequate space to the topic of water safety. For further information on boating safety, visit USCGBoating.org or enroll in one of the excellent water safety courses provided.

It is your responsibility to be aware of and comply with all relevant safety regulations. For all water recreation or sport you should have a reasonable swimming ability. Just as swimmers have a cardinal rule about not swimming alone, it is strongly advised that you should never go boating alone.

Boating Safety Tips

- Always wear a USCG approved PFD (life vest) at all times while on the water.
- Be aware of your local boating rules and regulations and abide by them accordingly.
- Check inflation levels each time before you go out and inflate your boat for a full 24 hours before undertaking long trips.
- DO NOT allow children to use Sea Eagle unsupervised.
- DO NOT consume alcohol while boating or operating a boat while under the influence of alcohol or drugs.
- DO NOT drag your Sea Eagle over rocks or gravel if it can be avoided.
- DO NOT exceed the certified maximum capacities of this boat under any circumstance.
- DO NOT go boating alone.
- DO NOT use compressors, co2 or compressed air for inflation, only use Sea Eagle recommended pumps.
- DO NOT use your Sea Eagle Boat as a personal flotation device as they are designed for leisure/recreation in mind.
- DO NOT sleep inside of your Sea Eagle while on the water.

Safety Equipment

The type of water conditions you are on should determine the type of safety equipment that you should have on board. For all types of boating we strongly recommend that every passenger wear a USCG approved PFD (personal flotation device) like a life vest. In most places this is a requirement by law, but from our point of view it is also an exercise of good judgment to have a PFD for all passengers. Other important items to consider for all types of boating...

Drinking Water & Snacks: Kayaking is a physical activity that can work up both a thirst and a sweat and especially on a hot or warm day it is a good idea to have drinking water readily available to you to prevent dehydration. Bring a good amount of water for all passengers as you want to avoid drinking the water you're kayaking in which may be full of contaminants.

Extra Clothes/Layers: You never know when the weather can change and it's a good idea to come prepared with extra clothing. If you have a dry (waterproof) bag than we recommend storing them inside so they're not damp in case of emergency.

First Aid-Kit: The contents of the kit may vary depending upon your preferences, but make sure to carry a kit that reflects the possible dangers for the conditions you are in.

Foot Pump/Repair Kit: Although our boats are both durable and rugged, it may be possible that you need to make a repair while on the water in which case you'll need the repair kit and the foot pump to re-inflate the boat. If this is your first repair, you may also want to bring this instruction manual with you.

Sun/Rain Protection: A hat can protect both your face and head from the rain or sun. You may also want to carry sunscreen with you as both the sun and the sun's reflection from the water can do serious damage to your skin. If you are out for prolonged periods of time you may need to reapply sunscreen as needed.

Whistle: Having a whistle readily available to you in case of emergency is a great way to attract the attention of others if assistance is needed.

Inflation Valves & Pumps



One-Way Air Valve

Place the retainer ring over the valve base and screw the valve into the base. Unscrew the outer cap on the valve to reveal the inflation port.



MB-50 (Optional)

This electric pump works using a 12V automobile power outlet. Please note that the star shaped valve adapters and deflation cap are not necessary for Sea Eagle boats.



Foot Pump

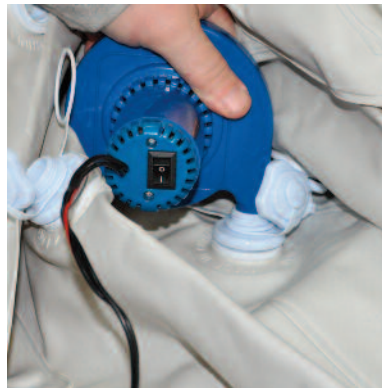
The foot pump is a high capacity pump made of durable ABS plastic. To use simply press the two halves of the foot pump together and connect the hose to the inflation port marked OUT.



First, make sure your pump is switched OFF and then insert the power adapter into the power outlet. If you have a weak battery you may want to keep your engine running while you're using the pump.



The triple nozzle adapter comes with the foot pump and is needed to inflate the deluxe one-way air valve. Insert the ribbed end of the large rounded adapter piece into the hose of your foot pump.



No extra nozzles are needed to inflate the main air chambers of your boat, just insert the pump into the valve and switch it on. Do not drop or suddenly move the pump while it is switched on.



To inflate your boat, simply place the adapter into the valve and begin pumping with your foot pump. When you're finished, close the outer cap of the valve.



Air compressors that are designed for other uses like tire inflation (usually around 50 PSI) can easily harm your Sea Eagle which works at a much lower pressure of 1.1 PSI. For this reason we recommend only using Sea Eagle pumps.

Assembly & Inflation



To begin unroll your boat on a clean, flat surface. Locate the three main air chambers in the stern and screw the deluxe one-way air valves to them. Make sure not to cross the threads when screwing in the valve to the base or when tightening the outer cap.



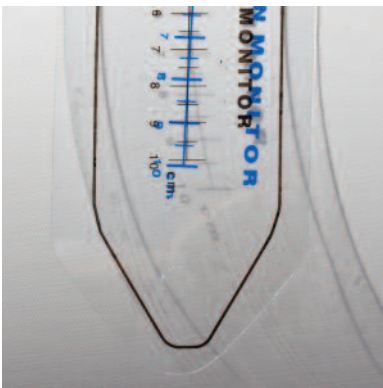
SEC Inflatable Seat
The SEC seat inflates using two deluxe one-way air valves. Once the seat is inflated you can simply place inside of the boat. The seat is held in place by the weight of the user and the pressure from the surrounding tubes.



Printed on the inside of your kayak is a diagram of the plastic inflation monitor that is included with this boat. As you begin to inflate, the hull material will stretch so that the printed diagram will expand to match the clear plastic inflation monitor.



Deluxe Inflatable Seat
The deluxe inflatable seat inflates using two deluxe one-way air valves. Inflate the seat so that its reasonably hard. You can also change the center of gravity by letting a bit of air out of the bottom portion of the seat.



Inflate the three main chambers of the hull and the bow and stern spray skirts. You can safely inflate up to 1 centimeter beyond the diagram. When the boat is fully inflated you should be able to indent your thumb into the material about 1/2 to 3/4 of an inch.



If you're paddling solo, position the seat just aft of the mid-point of the kayak. If you're paddling tandem, position the rear seat as far back as possible and the front seat slightly forward of the mid-point of the kayak.



Drain Valve
Featured on the rear of your Sport Kayak is a self bailing drain valve. If you are planning to use your boat on calm, flat-water you should close the drain valve. If you are planning to use your boat on rapids or surf, you should open the valve as shown.



Carry Bag
This 440 Denier Nylon carry bag measures 26"x48" and is great for the transportation of your Sea Eagle. Comes with convenient carry strap and drawstring.

Optional Accessories

4-Part Paddle

Each paddle includes two shafts, two blades and 2 drip guards. Its important to follow the directions exactly as assembling the paddles incorrectly may leave you with an inoperable paddle that cannot be disassembled.



Begin by locating the shaft with 3 pre-drilled holes and using the push pin on the other shaft, join the two shafts together so that the 3 pre-drilled holes now form the middle of the paddle.



The 3 pre-drilled holes are used for feathering so that you can position one blade to 90° from the other. This makes paddling into a stiff breeze easier because the blade that is not in the water will be able to slice through the wind with little resistance.



Next, slide a drip guard over each end of the shaft, positioning the drip guards so they are on the outside of your hands (closest to the pinky finger). Connect the paddle blades to the end of each shaft to complete assembly.



Sea Eagle QuikSail

Converts any kayak into a sailing vessel. Easily deploys in under one minute, breaks down to just 43" for convenient storage in the bow or stern and sails up to 45° left or right. Comes complete w/separate instruction manual.

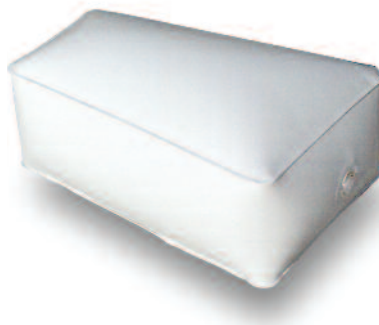
Squid Anchor Kit

No assembly required, it's fast and easy to use. It weighs only about 7 oz. when empty and can be filled up to 11 lbs. The anchor can also be flipped inside out to become its own compact storage bag.



Bow Float

Used for whitewater, the bow float sits in the bow of the boat and adds buoyancy to your kayak and can also double as a foot rest. Inflates using the foot pump and cone shaped adapter from the triple nozzle.



EZ Cart (small)

This simple to use and easy to assemble cart wheel system fits allows you to roll your kayak from where you inflate to where you launch it. Packs down for easy transport. Please note this is not a trailer and should not be used with a vehicle.





Waterproof Bag

This clear waterproof bag will hold your cell phone, camera or any other small article you want to stay dry.



Child's Life Vest

Children are required by law to wear life jackets in many jurisdictions. Designed for children 50-90 lbs. in weight, this U.S. Coast Guard life jacket features secure belts for a comfortable, secure fit.



Only fill your waterproof bag about half way, or no more than 3/4 of the way full. To close the waterproof bag it must be folded three times.



Paddling Life Vest

U.S.C.G approved! This type III PFD is designed specifically for paddling and rowing comfort with more room under the arms. Comes in various sizes and features vest pocket, zipper closure and adjustable nylon straps for a secure fit.



Starting at the top, fold the bag once so that it aligns with the back of the strip of velcro and then again keeping the strips aligned. Make the final fold pressing the two strips together.



3M Marine Cleaner

Cleans, shines, conditions and protects vinyl, rubber and plastic surfaces. Deep cleans dirt and grime, enhances appearance. Restores natural sheen, protects surfaces. Fresh lemon scent.



Before using on the water, make sure that you have triple folded your waterproof bag and that it is tight and secure. Do not roll your bag.



303 Protectant

We all try to keep our boats clean, but there are some stains you just can't avoid. 3M Marine Cleaner & Restorer can remove the toughest stains from mud, bird droppings, oil, and many others.

Deflation & Storage

Although PVC material can become brittle in extremely cold temperatures, you can still safely store your Sea Eagle in them so long as you avoid dropping it and do not subject it to any sudden impacts.

If you're planning to leave your Sea Eagle outside, be sure to keep it raised up off of the ground. Its also a good idea to keep it covered so that it is not directly exposed to berries, leaves, rain, sunlight and other elements. Sea Eagles that are left in water will most likely have to be emptied from time to time.

Make sure that your boat is dry before storing your kayak for more than a few days, to remove any excess moisture that could cause unsightly mildew. Choose a cool, dry spot when storing in an enclosed area like basement, closet or garage.



Begin by deflating your kayak. To deflate, unscrew the valves from the base. Most of the air is immediately released. Excess air can be pushed out as you rollup the kayak.



Allow about a minute or two so that more air can be released and then from the stern, begin by rolling one side of the kayak toward the center and the other side of the kayak over the first.



Starting from the stern, roll the kayak up. It is important to roll the boat tight from the beginning to ensure you get the most compact storage possible. When you reach the end, tuck the bow into the hull and place the skeg protectors on the skegs.

Troubleshooting

If your boat is losing air it doesn't necessarily mean that its leaking. For instance a boat that is inflated late in the day with 90° air may cool 20° overnight. The cooler air will exert less pressure on the hull and the boat will appear softer the next morning. When there has been no variation in temperature and your boat is losing air then it is time to start looking for the leak.

The first thing you should do when looking for a leak is to actually look at the boat. Visually inspect the boat from a few feet away and if necessary, flip it over and closely check the outside. Any large leaks when your boat loses a considerable amount of air should be clearly visible.

Be sure to check the tightness of the one-way recessed valves as well and if necessary, tighten them with the valve wrench included in the orange repair kit canister.

If you have a rough idea of where your leak is but can't see it, you may want to try listening for it as you may be able to hear the air escaping and pinpoint the leak.

Other troubleshooting techniques you can try to locate the leak is to dowse/spray a mix of dishwashing liquid over suspicious areas. The leak may produce bubbles that will pinpoint the location of the leak.

Crossed Threads

Make sure that both the inner valve and the outer cap are firmly screwed together. If threads are crossed on either item a slow leak could result. A good way to avoid this is to first turn the outer cap back 1/4 turn.



Denting

Check the O-Ring base for dents. Denting can occur when the valve body lies across the O-Ring during storage. Heat the O-Ring with a hairdryer for about a minute or so until the dent eases itself out.



Diaphragm Check
Check the black diaphragm at the bottom of the inner valve for grains between the diaphragm and the inner valve. Also check the threads on the inner valve, boat hull, and outer cap for any dirt or sand which might break the seal.



Repair Kit
All Sea Eagles come standard with a repair kit which includes two material patches and tubes of PVC based glue.



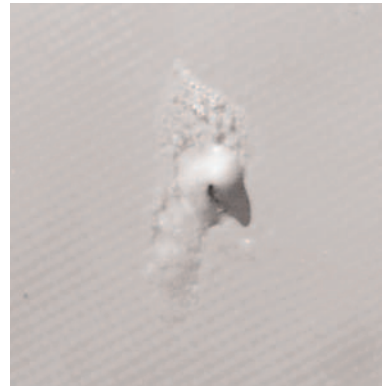
Skeg Straightening
If for any reason (most commonly being that the boat was folded too tightly) your skeg(s) becomes bent there is an easy solution to straightening it out.



PVC Based Glue
For repairs on our boats you will need to use a PVC based glue. We suggest this 12 oz. can of Vyna Bond if you need more glue than what comes standard in the repair kit.



Using a hair dryer, warm up the skeg until the curve becomes soft. This should only take a about 2-3 minutes on a normal setting. Once the skeg(s) is soft you can then straighten it out by hand.



Repair: Pinholes
Deflate your boat and thoroughly clean and dry the area that is to be repaired. For small punctures less than 1/8" apply a small drop of glue and allow 12 hours to dry.

Repairs

Although our Sea Eagles are very rugged and tough, you may still experience the occasional puncture through use of your boat. Fortunately most repairs are fairly easy and only take a few minutes.

For an extensive repair please contact us directly for assistance or a quote to have it sent back and repaired at our facility. Repair fees start at \$75.00 and do not include return shipping charges.



For immediate use allow 30 minutes to dry and then inflate the compartment with the repair only 3/4 full and be sure to make a more permanent repair later.



Repair: Patching
 Leaks that are larger than a pinhole can be patched. Most patches can be done in a few minutes, but we do offer a repair service for more complex jobs out of warranty.



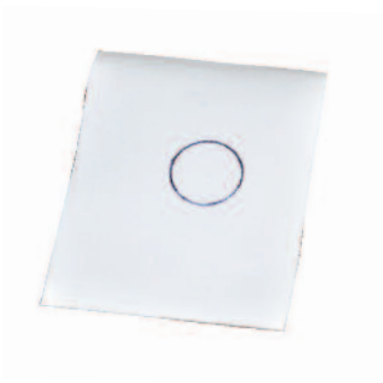
Place the patch on the damaged area and press down firmly. Let the glue sit for 2-4 minutes until it appears tacky. If glue does not hold, heat patch with a hair dryer.



Once you have located the leak make sure you thoroughly clean the area surrounding the leak of any dirt or grime. After the area is clean and dry you can circle the area to make locating the leak easier throughout the repair process.



A temperature of approximately 160 degrees will activate the adhesive and from there you can press firmly on the patch until cooled. It is VERY IMPORTANT that you DO NOT use a hair dryer on an inflated boat.



Using a ball point pen, trace the outline of your patch which should be large enough to overlap the damaged area by approximately 1/2". Angle the pen inward a bit so that the ink will be covered by the patch later.



A temperature of 160° degrees will activate the adhesive and from there you can press firmly on the patch until cooled. DO NOT use a hair dryer on an inflated boat and NEVER use a heat gun on your boat.



Apply adhesive to the dull side of the patch and around the area to be repaired. Coat the affected area lightly but completely with glue.



DO NOT USE D-Rings
 Sport Kayaks which are manufactured with a completely different type of (stretchable) PVC material that cannot accommodate the use or application of gluing on D-Rings.



2-Part Adhesive

The adhesive that comes standard in your repair kit works for most repairs and installations, but for more detailed and extensive repair we recommend a 2-part PVC adhesive.



Methyl Ethyl Ketone

Methyl Ethyl Ketone or MEK is a solvent used to dissolve PVC based glue in case you need to remove a D-Ring, glue residue or patch. MEK is a strong solvent and can damage the material to the boat so use it very carefully and sparingly.



MEK is very flammable, keep away from fire, lit cigarettes or sparks. When handling MEK we recommend wearing rubber gloves. Be sure to use MEK in a well ventilated area and heed all warnings from the manufacturer.

To remove a patch with MEK, dip a cotton swab and apply it to the outer edges. The glue will start to dissolve and the patch will begin to separate from the boat. Continue to carefully apply MEK to the underneath of the patch and continue peeling it off. Once removed you can also clean off any residual glue with the MEK solvent.

To reapply a new patch, allow approximately 30 seconds for the MEK to evaporate and apply the item to the boat.