

SEA EAGLE.com®



Sea Eagle FoldCat

375FC & 440FC

Instruction & Owner's Manual

For video instructions visit SeaEagle.com/Instructions

Sea Eagle Boats Inc.
19 N. Columbia Street, Suite 1
Port Jefferson, NY 11777
1-800-748-8066

May 2012

Sea Eagle Guarantee

Congratulations on purchasing a Sea Eagle! With over 40 years of experience in designing, selling and using these quality inflatables, we're confident that you are going to love your Sea Eagle and we're ready to proudly stand behind them.

Sea Eagle Warranty

All Sea Eagle products come standard with a 3 year warranty against any manufacturing defect that begins the date that your product is delivered. Sea Eagle will refuse delivery on all packages without a valid return authorization number and will not be responsible for the shipping or handling charges. To obtain a return authorization number, please contact Sea Eagle directly unless you purchased from an authorized dealer/reseller in which case you should contact them for more information.

Sea Eagle must inspect equipment in order to determine if there is a defect. In the event that an item must be shipped back to us for inspection, Sea Eagle will only reimburse the standard return shipping charge through FedEx, UPS or the U.S. Post Office at published shipping rates. Retail shipping outlets like The UPS Store will not be reimbursed and you will be responsible for handling and packing charges.

The Sea Eagle warranty does not apply to products that are manufactured by Minn Kota or Torqeedo. These products are covered by their own, respective warranties. Please refer to the manufacturer's warranty of each product for details.

If you received an item damaged, please call the shipping carrier to report damaged merchandise. Do not return damaged merchandise until it has been inspected by the carrier. Sea Eagle will be notified by the carrier when they have completed their inspection and if necessary, Sea Eagle will arrange for the repair or replacement of damaged merchandise.

Decals, Stickers & Registration

Always contact your state boating authorities for information on boating registration and regulations. Most states require you to register your boat if you are using a motor.*

Upon registration it may be required to provide the Manufacturer's Statement of Origin.

Purchases made through an authorized dealer or reseller may require for you to contact them directly in order to obtain this. You may be charged your own state sales tax if you were not charged sales tax at the time of purchase.

Registered boats generally require for the registration number to be applied to the boat. We do not recommend the use of decals or stickers as they tend to crack and peel over time with the repeated inflation and deflation of your Sea Eagle. Instead we suggest applying these numbers to a small piece of hard plastic or marine plywood and hanging it from your boat like a license plate if permitted by your state. Another method is to apply the numbers to the hull using either PVC based paint or permanent marker.

**** Please note that our Sea Eagle Explorer Kayaks, FastTrack Kayaks, Sport Kayaks and LB-11 LongBoard are not rated for use with a motor.***

Contact Us

Unlike many other companies today we pride ourselves on answering the phone and helping you with any concerns, questions or special ordering needs that you may have!

Feel free to give us a call at 1-800-748-8066 and we will be happy to talk with you!
Our business hours are Monday to Friday from 9-5 (EST).

Sea Eagle Boats Inc.
19 N. Columbia Street, Suite 1
Port Jefferson NY 11777
1-800-748-8066
staff@seaeagle.com

Operating Your Sea Eagle

Motoring

Your Sea Eagle FoldCat comes equipped with a motor mount that can be used with either an electric or gas motor. Since only the pontoons are in touch with the water there is less drag, so the FoldCat motors very well with small outboard motors. Both FoldCat models have been individually rated by the National Marine Manufacturer's Association for a motors maximum capacity for both dry weight and horsepower. Under no circumstance should you equip a motor that exceeds these capacities (whether they be for the dry weight or the horsepower or both). Not only can this result in damaging your Sea Eagle FoldCat, it will also void your Sea Eagle warranty.

Gas motors are measured in units of horsepower and are generally built with power and speed in mind. The FoldCat 375FC is rated for a maximum of 3HP up to 45 lbs. and the FoldCat 440FC is rated for a maximum of 4HP up to 60 lbs. For the best performance with a FoldCat we recommend using a 15" short shaft, although a longer shaft can be used in greater depths of water.

Traditional electric motors are measured in units of thrust (the pulling or pushing power of a motor) and are slower and quieter on the water than gas motors. There is no direct correlation of thrust to horsepower although most consider traditional electric motors to be about a 1HP (which is more of a guess than an approximation). Both FoldCat models can use anything up to a 74 lb. thrust electric motor.

Advantages of having an electric motor over a gas is that they are lighter to transport and easier to maintain. In order to operate an electric motor you will need a 12V deep cycle marine battery. Other suggested accessories are a battery charger and a battery power center to house the battery itself.

The Torqeedo Travel 1003 electric motor is unlike any other electric motor on the market today. Powered by a waterproof lithium ion battery (battery charger included), the Travel 1003 delivers the true 3HP performance of a gas motor! Features include on board computer display, GPS and an audible alarm when the battery reaches 30%.

Torqeedo electric motors are lighter to transport than gas motors and do not require a heavy 12V battery like traditional electric motors. You can also power your Torqeedo Travel 1003 using the new Sea Eagle Solar Canopy which is comprised of a PowerFilm Solar Panel.

For the FoldCat 375FC we recommend the Torqeedo Travel 1003S (short 23" shaft) model and for the FoldCat 440FC we recommend the Torqeedo Travel 1003L (long 29.3" shaft) model.

Minn Kota, PowerFilm & Torqeedo products come with a manufacture warranty and are not covered by the Sea Eagle warranty. All warranty work is handled directly by the respective manufacturer and all sales on these products are final.

Rowing

You may be surprised at how easy it is to row your Sea Eagle FoldCat. You can row your FoldCat facing forward or backwards. When you row forwards, you face backwards. This means you will have a great view of where you have been, but almost no view of where you are going. Be sure to check over your shoulder frequently to avoid any obstacles or obstructions. Be aware of the conditions of the water you are rowing in.

You should be aware of any and all obstacles and dangers that you might encounter (i.e. buoys, docks, moored boats, motor boats, sail boats, waves, weather, lightning, rain, etc). Please note to give way to both motor boats and sail boats as they have the right of way.

If you are new to rowing, we suggest that you practice rowing for several hours near the shore before venturing out further onto open waters. Practice only makes perfect and ensures that you are comfortable in your boat in almost any weather conditions you may come across. Continually practice your rowing strokes, trying to make them as fluid and smooth as possible.

When pulling your oars through the water you should try to keep the blades fully immersed in the water, but as close to the surface as possible. This will give you greater rowing leverage. Even if you are motoring your Sea Eagle FoldCat, we always recommend having your oars on board in case of emergency or engine failure.

Safety

In a manual of this type it is impossible to give adequate space to the topic of water safety. For further information on boating safety, visit USCGBoating.org or enroll in one of the excellent water safety courses provided.

It is your responsibility to be aware of and comply with all relevant safety regulations. For all water recreation or sport you should have a reasonable swimming ability. Just as swimmers have a cardinal rule about not swimming alone, it is strongly advised that you should never go boating alone.

Boating Safety Tips

- Always wear a USCG approved PFD (life vest) at all times while on the water.
- Be aware of your local boating rules and regulations and abide by them accordingly.
- Check inflation levels each time before you go out and inflate your boat for a full 24 hours before undertaking long trips.
- DO NOT allow children to use Sea Eagle unsupervised.
- DO NOT consume alcohol while boating or operating a boat while under the influence of alcohol or drugs.
- DO NOT drag your Sea Eagle over rocks or gravel if it can be avoided.
- DO NOT exceed the certified maximum capacities of this boat under any circumstance.
- DO NOT go boating alone.
- DO NOT use compressors, co2 or compressed air for inflation, only use Sea Eagle recommended pumps.
- DO NOT use your Sea Eagle Boat as a personal flotation device as they are designed for leisure/recreation in mind.
- DO NOT sleep inside of your Sea Eagle while on the water.

Safety Equipment

The type of water conditions you are on should determine the type of safety equipment that you should have on board. For all types of boating we strongly recommend that every passenger wear a USCG approved PFD (personal flotation device) like a life vest. In most places this is a requirement by law, but from our point of view it is also an exercise of good judgment to have a PFD for all passengers. Other important items to consider for all types of boating...

Drinking Water & Snacks: Kayaking is a physical activity that can work up both a thirst and a sweat and especially on a hot or warm day it is a good idea to have drinking water readily available to you to prevent dehydration. Bring a good amount of water for all passengers as you want to avoid drinking the water you're kayaking in which may be full of contaminants.

Extra Clothes/Layers: You never know when the weather can change and it's a good idea to come prepared with extra clothing. If you have a dry (waterproof) bag than we recommend storing them inside so they're not damp in case of emergency.

First Aid-Kit: The contents of the kit may vary depending upon your preferences, but make sure to carry a kit that reflects the possible dangers for the conditions you are in.

Foot Pump/Repair Kit: Although our boats are both durable and rugged, it may be possible that you need to make a repair while on the water in which case you'll need the repair kit and the foot pump to re-inflate the boat. If this is your first repair, you may also want to bring this instruction manual with you.

Sun/Rain Protection: A hat can protect both your face and head from the rain or sun. You may also want to carry sunscreen with you as both the sun and the sun's reflection from the water can do serious damage to your skin. If you are out for prolonged periods of time you may need to reapply sunscreen as needed.

Whistle: Having a whistle readily available to you in case of emergency is a great way to attract the attention of others if assistance is needed.

Inflation Valves & Pumps

Recessed Air Valves

Remove the cap and press and turn the valve stem counterclockwise so that the stem is in the UP position. Only when the stem is in this position the valve will retain air. Turning the stem clockwise will put the valve in the down position for deflation.



MB-100 (Optional)

The MB-100 electric pump is designed for our higher pressured Sea Eagle Inflatables. Comes complete with a 12V DC power supply, hose and attachments.

A-41 Foot Pump

The A-41 Foot Pump is a high capacity pump made of durable ABS plastic. To use simply press the two halves of the foot pump together and connect the hose to the inflation port marked OUT. Insert the valve adapter at the other end of the hose.



Included are a cluster of seven valve adapters, with raised numbers on each arm of the cluster. The adapter marked number 1 is the only adapter needed for your Sea Eagle.

Recessed Adapter

The recessed valve adapter is located inside of the orange repair kit canister. Insert the ribbed end of the valve adapter into the hose on the foot pump. This valve adapter is not compatible for use with electric pumps.



Also included is a triple adapter similar to the one that is included with your A-41 foot pump. Using the large rounded nozzle, take the ribbed end and insert into the hose of the MB-100.



Make sure that the valve stem is in the up position and insert the valve adapter into the valve and turn clockwise to lock into position. Once the desired pressure is reached you should feel resistance on the foot pump.



Take adapter number 1 from the cluster and firmly push it into the large rounded nozzle. To ensure that the adapter is on as tight as possible, push it against a hard surface like a floor or table once it is connected.



Attach the ribbed end of the hose and with the joint attached to the hose, push it into the inflation port located directly above the pressure dial. The inflation port can be identified by the raised arrows on the red pump cover which point to it.



BTP Turbo (Optional)
The BTP Turbo electric pump comes complete with a nylon shoulder carry bag, 12V DC power supply, hose and adapters.



Adjust the pressure dial to read 3.2 PSI which is the operating pressure for your Sea Eagle.



Included are a cluster of seven valve adapters, with raised numbers on each arm of the cluster. The adapter marked number 1 is the only adapter needed for your Sea Eagle.



Open the hatch on the bottom of the MB-100 to reveal alligator clips. Using the clips, connect the MB-100 to a 12V battery (car or marine). Connect the red clip to the positive pole and connect the black clip to the negative pole.



Take adapter number 1 from the cluster and firmly push it into the grey joint that is already connected to the end of the hose. To ensure that the adapter is on as tight as possible, push it against a hard surface like a floor or table once it is connected.



When you are ready to inflate switch the pump on with the ON-OFF switch. The MB-100 will automatically stop once the set pressure is reached, however you will still need to switch the pump off when you are finished inflating.



Connect the other end of the hose to the red inflation port at the top of the pump, located near the ON and OFF buttons.



Adjust the pressure dial to read 3.2 PSI which is the operating pressure of your Sea Eagle. PSI is marked in red on the dial. Never turn the dial when the device is under pressure as this will immediately cause the instrument to break.



To charge the portable battery, plug it into the charger and then plug the charger into a household electrical outlet. The light on the battery charger will blink red until fully charged. When it is fully charged the light will be a solid green.



Connect the cord at the end of the power supply into the end of the cord attached to the pump.



It is recommended to keep the Turbo Pump inside of the carry bag to make transportation easier and to protect the pump from sand which could jam it. The carry bag comes equipped with compartments for the pump, battery and charger.



Connect the Turbo Pump to a 12V battery (car or marine) using the alligator clips at the end of the extension cord. Connect the red clip to the positive pole and the black clip to the negative pole.



Press the ON button to begin inflation. The pump operates in two stages which can be identified by the noise of the turbine at the start, followed by the piston. The pump automatically stops once the pressure is reached.



If you ordered the Turbo Pump Kit you can also connect the pump to the portable battery in place of the alligator clips.



Air compressors that are designed for other uses like tire inflation (usually around 50 PSI) can easily harm your Sea Eagle which works at a much lower pressure of 3.2 PSI. For this reason we recommend only using Sea Eagle pumps.

Assembly & Inflation



Clear a clean and flat space that is free of any sharp objects and unroll the boat hull so that it is laid out flat. Once the FoldCat is unrolled, both pontoons should be parallel. Please note that the aluminum slat floorboards have been pre-installed.



Swivel Seat

The 375FC has two basic seating positions with one at the rear and the other at the front. The 440FC has nine possible positions with the most common being one or two seats in the front and two seats in the rear.



Stabilizer Underbars

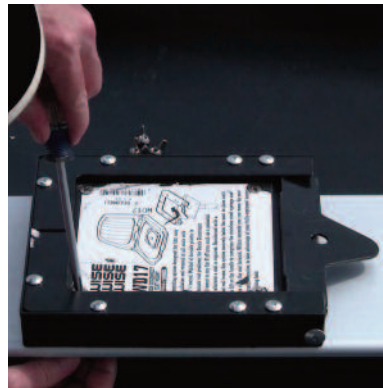
Each FoldCat comes equipped with aluminum stabilizer underbars. From the bow, slide one underbar under the first and second (and third for the 440FC) slat floorboards.



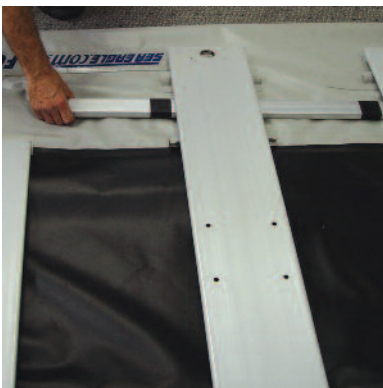
Quick release-a-seat mount comes with four bolts and four wing nuts. You will require a Phillips head screwdriver (not included) to complete installation. The release-a-seat mount is a one-time only assembly and can remain on the hull when being folded for storage.



Align the ends of the underbars against the triangular markings on each pontoon.



Position the mount over one of the pre-drilled holes designated for it and bolt the mount to the floorboard using the bolts and wing nuts.



375FC:

When properly aligned, the underbars should line up underneath the center floorboard slat.

440FC:

When properly aligned, the underbars overlap side by side under the third floorboard slat from the bow.



Now slide the swivel seat(s) into the quick release swivel seat mounts and make sure that the spring loaded lever mechanism locks into place.



Pedestal (optional)

The pedestal is included in several FoldCat boat packages and includes four bolts and four wingnuts. The 375FC can be fitted with a total of two pedestals and the 440FC can be fitted with a total of four pedestals.



Line up the notch at the base of the rod holder with the key in the mount and insert it firmly into place.



Bolt the upper end of the pedestal directly to the bottom of the swivel seat. Slide the other end of the pedestal into the release-a-seat mount and check to make sure that the spring loaded lever mechanism is locked.



Oars & Oarlocks

Each FoldCat model is equipped with a set of oarlocks and oars. Each oarlock includes one oarlock pin, two bolts, two knurled knobs and two washers.

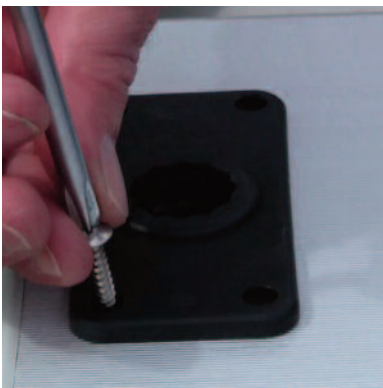


Rod Holders

Each rod holder includes flush mount adapter and hardware. You will need a Phillips Head screwdriver which is not included. Once the mounts are installed they do not need to be removed for storage.



With the bolt threaded through the washer, bolt the raised oarlock bases at the ends of the floorboard slat. Bolt the raised oarlock bases at both ends of the aluminum bench through the 4 pre-drilled 3/8" holes (2 at each end) using knurled nuts.



Install the flush mount into the ends of the floorboard slat where there is a 1 1/2" hole for the mount surrounded by four 1/8" holes for the hardware. Insert the four screws into the mount and once they are inserted, begin to tighten the screws using the screwdriver.



Snap the oars together and slide them through the oarlock pin and then insert the oarlock pin into the top of the base of the oarlock. Tighten the oarlock pin with the wingnut.



Once the oarpins are in place, lock them using the slide rings as shown.



Casting Bar

Adds safe and secure support for stand-up casting and doubles as a convenient hand-hold while stepping aboard. Includes crossbar with padded cover, two upright leg bases, and two 4mm hex keys (one spare).

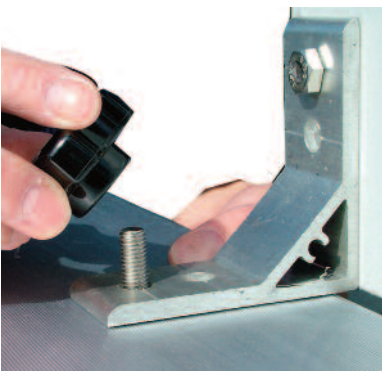


375FC Motormount

Includes wooden motor mount, two L-brackets, four bolts, knurled knobs and washers.



Make sure your FoldCat is only partially inflated before attaching the upright base of the casting bar. Slide the bottom of the casting bar's base into the underbar in the bow of the FoldCat.



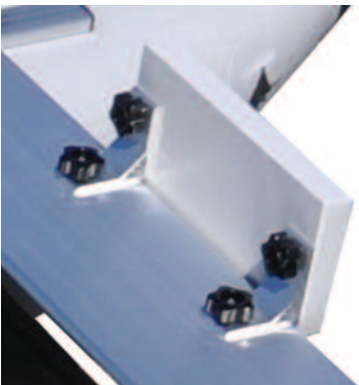
440FC Motormount

Includes wooden motor mount, four L-brackets, eight bolts, knurled knobs and washers.

Secure the L-Brackets to the motor mount block so that the pre-drilled holes on the block match up to the bottom pre-drilled hole on the bracket. With the bracket attached to the mount, align them to the pre-drilled holes on the floorboard and secure the mount to the board.



Once the base of the uprights are inserted, fully into the underbars, tighten the set screws at the base using the hex key.



It is important to make sure that you thread the bolts through the bottom holes at the top of the bracket in order to prevent cavitation when using a short shaft gas motor. Tighten the knurled nuts and bolts before securing the motor.



Insert the top of the casting bar into each of the uprights. The height of the casting bar can be adjusted to one of three positions using the pre-drilled holes on the uprights. Use the buttons at the base of the uprights to tilt the casting bar backwards and forward.

Optional Accesories

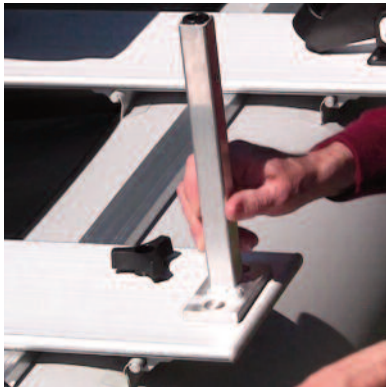


Canopy

Keeps you cool and protected from the harmful UV rays of the sun or keeps you dry in the rain. Easily folds down and out of the way. Please reference your FoldCat model when ordering as the 440FC uses a wider canvas.



Fold the canopy and connect the tubing to the V shaped brace and then insert the canopy rods at the end into the canopy bases installed on your FoldCat.



Begin by removing the oarlocks and replacing them with the canopy bases and secure them in the same fashion.



Clip the two rear straps from the brace to the handles located in the stern of the boat. For the 440FC version of the canopy, these straps will be connected to both the bow and stern handles.



Next, feed the tubing through the canvas on the canopy. When you reach the opening in the middle at the top of the canvas, attach the bow strap over the aluminum tube.



Once the rear straps are clipped, use the bow strap to raise the canopy into position and clip the bow strap to the brass grommet in the black material flooring.



With the bow strap over the aluminum tubing, continue feeding it through the canvas. Please note that the bow strap is only used for the 375FC version of the canopy. The 440FC version of the canopy features an additional set of straps installed on the V shaped brace.



The 440FC version of the canopy does not use the bow strap as the V shaped brace for this contains straps for both sets of handles that are located in the bow and stern of your 440FC FoldCat.



3M Marine Cleaner
Cleans, shines, conditions and protects vinyl, rubber and plastic surfaces. Deep cleans dirt and grime, enhances appearance. Restores natural sheen, protects surfaces. Fresh lemon scent.



303 Protectant
We all try to keep our boats clean, but there are some stains you just can't avoid. 3M Marine Cleaner & Restorer can remove the toughest stains from mud, bird droppings, oil, and many others.



Paddling Life Vest
U.S.C.G approved! This type III PFD is great for all boating needs and gives you plenty of arm room in case you feel like rowing. Comes in various sizes with three adjustable buckles and adjustable nylon straps for a tight secure fit.



PFD Boat Cushion
Also U.S.C.G approved! A throwable type IV PFD which can be used in case of emergency or for everyday use as a comfortable seat.



Torqeedo Travel 1003
Delivering the power and performance of a 3HP gas motor, the Torqeedo Travel weighs just 29.5 lbs. Please specify motor before ordering as the 375FC takes the 1003S model and the 440FC takes the 1003L model.



Minn Kota Motors
Featuring Minn Kota's "Weedless Wedge" and with an unbreakable composite shaft, these electric motors are the most reliable trolling motors on the market. Minn Kota motors run off a 12V deep cycle marine battery which is not included.



Portable Charger
Protect and preserve your battery life with this portable 10 AMP, Minn Kota battery charger. Features fully automatic 3-stage charging. Weighs 17 lbs. Input: 120V AC Output: DC 12V



Power Center
Allows trolling motor leads and charger leads to be connected without opening the box. Built-in battery meter includes two 12-volt accessory plugs and three manual reset circuit breakers. Fits group 24 and 27 size batteries.

Deflation & Storage

Although PVC material can become brittle in extremely cold temperatures, you can still safely store your Sea Eagle in them so long as you avoid dropping it and do not subject it to any sudden impacts.

If you're planning to leave your Sea Eagle outside, be sure to keep it raised up off of the ground. It's also a good idea to keep it covered so that it is not directly exposed to berries, leaves, rain, sunlight and other elements. Sea Eagles that are left in water will most likely have to be emptied from time to time.

Make sure that your boat is dry before storing your kayak for more than a few days, to remove any excess moisture that could cause unsightly mildew. Choose a cool, dry spot when storing in an enclosed area like basement, closet or garage.

Before you begin the deflation process, please keep in mind that you should not fully deflate one chamber while other chambers remain fully inflated as doing this can cause damage to the bulkheads of your boat.



To deflate, press down on the valve stem and turn clockwise to lock into position. Release around 50-75% of the air from each chamber before fully deflating. Excess air can be pushed out as you rollup the boat.



Before you begin folding your FoldCat, remove all accessories (seats, motor mount, etc) first. Please note that the mounts for the swivel seat and rod holders do not need to be removed and can stay installed on your FoldCat.



Fold the hull of the boat inwards and underneath the transom. From the stern, fold the pontoons towards the transom and roll the boat forward pushing any excess air out of the boat as you go along. When you're finished, tuck the bow neatly underneath.



Place the hull at the center of the opened boat bag and wrap the boat with the narrow flaps first. Lash down with the nylon straps to secure and repeat this process with the wide flaps and nylon straps.

Troubleshooting

If your boat is losing air it doesn't necessarily mean that it's leaking. For instance a boat that is inflated late in the day with 90° air may cool 20° overnight. The cooler air will exert less pressure on the hull and the boat will appear softer the next morning. When there has been no variation in temperature and your boat is losing air then it is time to start looking for the leak.

The first thing you should do when looking for a leak is to actually look at the boat. Visually inspect the boat from a few feet away and if necessary, flip it over and closely check the outside. Any large leaks when your boat loses a considerable amount of air should be clearly visible.

Be sure to check the tightness of the one-way recessed valves as well and if necessary, tighten them with the valve wrench included in the orange repair kit canister.

If you have a rough idea of where your leak is but can't see it, you may want to try listening for it as you may be able to hear the air escaping and pinpoint the leak.

Other troubleshooting techniques you can try to locate the leak is to dowse/spray a mix of dishwashing liquid over suspicious areas. The leak may produce bubbles that will pinpoint the location of the leak.

Repairs

Although our Sea Eagles are very rugged and tough, you may still experience the occasional puncture through use of your boat. Fortunately most repairs are fairly easy and only take a few minutes.

For an extensive repair please contact us directly for assistance or a quote to have it sent back and repaired at our facility. Repair fees start at \$75.00 and do not include return shipping charges.



For immediate use allow 30 minutes to dry and then inflate the compartment with the repair only 3/4 full and be sure to make a more permanent repair later.



Repair Kit

All Sea Eagles come standard with this repair kit which includes both PVC patches and PVC glue. Repair kits that are included in boat package purchases also include the recessed valve adapter and valve wrench.



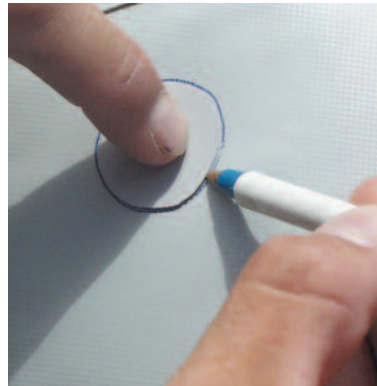
PVC Based Glue

For repairs on our boats you will need to use a PVC based glue. We suggest this 12 oz. can of Vyna Bond if you need more glue than what comes standard in the repair kit.

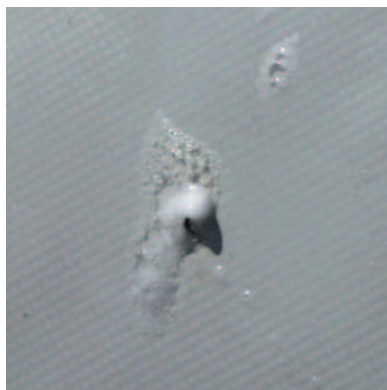


Repair: Patching

Leaks larger than a pinhole can be patched. Most patches can be done in a few minutes, but we do offer a repair service for more complex jobs out of warranty.

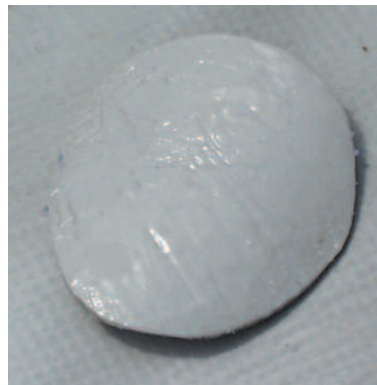


Using a ball point pen, trace the outline of your patch which should be large enough to overlap the damaged area by approximately 1/2". Angle the pen inward a bit so that the ink will be covered by the patch later.

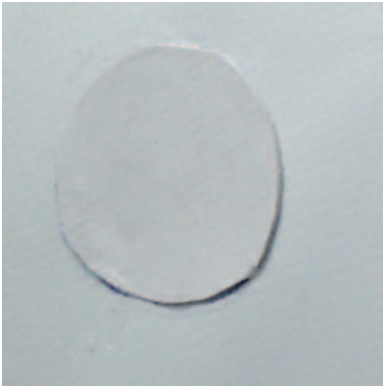


Repair: Pinholes

Deflate your boat and thoroughly clean and dry the area that is to be repaired. For small punctures less than 1/8" apply a small drop of glue and allow 12 hours to dry.



Apply adhesive to the dull side of the patch and around the area to be repaired. Coat the affected area lightly but completely with glue.



Place the patch on the damaged area and press down firmly. Let the glue sit for 2-4 minutes until it appears tacky. If glue does not hold, heat patch with a hair dryer.



MEK is very flammable, keep away from fire, lit cigarettes or sparks. When handling MEK we recommend wearing rubber gloves. Be sure to use MEK in a well ventilated area and heed all warnings from the manufacturer.



A temperature of 160° degrees will activate the adhesive and from there you can press firmly on the patch until cooled. DO NOT use a hair dryer on an inflated boat and NEVER use a heat gun on your boat.

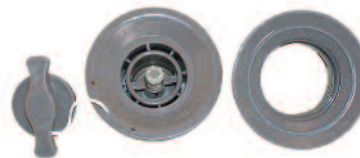
To remove a patch with MEK, dip a cotton swab and apply it to the outer edges. The glue will start to dissolve and the patch will begin to separate from the boat. Continue to carefully apply MEK to the underneath of the patch and continue peeling it off. Once removed you can also clean off any residual glue with the MEK solvent.

To reapply a new patch, allow approximately 30 seconds for the MEK to evaporate and apply the item to the boat.



2-Part Adhesive

The adhesive that comes standard in your repair kit works for most repairs and installations, but for more detailed and extensive repair we recommend a 2-part PVC adhesive.



Valve Replacement

DO NOT change out the valve unless you are sure it is broken. In most cases the valve will not leak. Because the base of the valve is built into the boat it cannot be replaced without cutting the chamber open.



Methyl Ethyl Ketone

Methyl Ethyl Ketone or MEK is a solvent used to dissolve PVC based glue in case you need to remove a D-Ring, glue residue or patch. MEK is a strong solvent and can damage the material to the boat so use it very carefully and sparingly.



Should you need to replace the valve than we recommend the following tools and methods. Suggested tools include channel lock pliers, valve wrench (included with your repair kit) vice grip pliers and piece of repair material (also found in the repair kit).



Inflate the chamber to full pressure if possible and loosen with the valve wrench by turning it counterclockwise. Deflate the chamber and unscrew the valve body from the base.



Place the material in the jaws of the channel lock pliers to protect the hull material. Once the body of is unscrewed from the base, pull the body from the opening and insert the replacement base. The opening is very tight, so you may have to pull on it hard.



Skeg Kit (optional)
Skegs add directional stability to aid straight tracking in windy or choppy conditions and are molded from an unbreakable polymer. Kit includes 4 skegs and one 12 ounce can of Vynabond glue.



Trace the outline of the skag onto the pontoon and smear a thin layer of glue on the inside of the area traced and onto the skag's base. Allow the glue to get tacky for about two to five minutes and press the skag hard against the pontoon, matching it up to the outline.



Make sure the two surfaces are joined properly and allow the glue at least twelve hours before using your Fold-Cat.



To prevent the skag from bending, cover it with the inflatable skag protector before folding your boat.



Remove all accessories from your FoldCat and turn it upside down. Your FoldCat should be fully inflated before you begin installation of the skegs. Skeg placement is about 13" (375FC) or 15" (440FC) from the bottom edge of the black cone on each pontoon.



Skeg Straightening
Skegs may become bent if the boat is folded too tightly. To straighten your skag use a hair dryer to warm up the skag until the curve becomes soft and then straighten it by hand. The skag should only take about 2-3 minutes to warm up.