



FastTrack Kayaks

385FT & 465FT

Instruction & Owner's Manual

For video instructions visit SeaEagle.com/Instructions

Sea Eagle Boats Inc.
19 N. Columbia Street, Suite 1
Port Jefferson, NY 11777
1-800-748-8066

September 2012



Sea Eagle Guarantee

Congratulations on purchasing a Sea Eagle! With over 40 years of experience in designing, selling and using these quality inflatables, we're confident that you are going to love your Sea Eagle and we're ready to proudly stand behind them.

Sea Eagle Warranty

All Sea Eagle products come standard with a 3 year warranty against any manufacturing defect that begins the date that your product is delivered. Sea Eagle will refuse delivery on all packages without a valid return authorization number and will not be responsible for the shipping or handling charges. To obtain a return authorization number, please contact Sea Eagle directly unless you purchased from an authorized dealer/reseller in which case you should contact them for more information.

Sea Eagle must inspect equipment in order to determine if there is a defect. In the event that an item must be shipped back to us for inspection, Sea Eagle will only reimburse the standard return shipping charge through FedEx, UPS or the U.S. Post Office at published shipping rates. Retail shipping outlets like The UPS Store will not be reimbursed and you will be responsible for handling and packing charges.

The Sea Eagle warranty does not apply to products that are manufactured by Minn Kota or Torqeedo. These products are covered by their own, respective warranties. Please refer to the manufacturer's warranty of each product for details.

If you received an item damaged, please call the shipping carrier to report damaged merchandise. Do not return damaged merchandise until it has been inspected by the carrier. Sea Eagle will be notified by the carrier when they have completed their inspection and if necessary, Sea Eagle will arrange for the repair or replacement of damaged merchandise.

Decals, Stickers & Registration

Always contact your state boating authorities for information on boating registration and regulations. Most states require you to register your boat if you are using a motor.*

Upon registration it may be required to provide the Manufacturer's Statement of Origin.

Purchases made through an authorized dealer or reseller may require for you to contact them directly in order to obtain this. You may be charged your own state sales tax if you were not charged sales tax at the time of purchase.

Registered boats generally require for the registration number to be applied to the boat. We do not recommend the use of decals or stickers as they tend to crack and peel over time with the repeated inflation and deflation of your Sea Eagle. Instead we suggest applying these numbers to a small piece of hard plastic or marine plywood and hanging it from your boat like a license plate if permitted by your state. Another method is to apply the numbers to the hull using either PVC based paint or permanent marker.

**** Please note that our Sea Eagle Explorer Kayaks, FastTrack Kayaks, Sport Kayaks and LB-11 LongBoard are not rated for use with a motor.***

Contact Us

Unlike many other companies today we pride ourselves on answering the phone and helping you with any concerns, questions or special ordering needs that you may have!

Feel free to give us a call at 1-800-748-8066 and we will be happy to talk with you!
Our business hours are Monday to Friday from 9-5 (EST).

Sea Eagle Boats Inc.
19 N. Columbia Street, Suite 1
Port Jefferson NY 11777
1-800-748-8066
staff@seaeagle.com

Operating Your Sea Eagle

Lake & Stream Paddling

There are two very important points to consider before venturing out into calm, flat-water found in lakes and streams.

First, install your skeg underneath your kayak at the stern. The skeg will give you greater directional stability by reducing the natural yaw of the kayak. Yaw is the tendency of the back of the boat to move in a zigzag pattern. Second, make sure that your drain valves are closed and tightened properly to ensure that you have a dry trip. If the drain valves are left open in these conditions water will come through them and fill the kayak making it harder to maneuver and getting you and your gear wet in the process.

If you're new to paddling, start off slowly and hold your paddle out in front of you with your arms as straight as possible. Keep your eyes up and focused on the horizon and as the kayak begins to pick up speed it will maintain a true heading. If you dig in too hard at first the kayak will tend to yaw in the water. When you're paddling with a partner (tandem), try and coordinate your strokes so that you're both paddling in unison. If you start to paddle out of unison, simply stop and start again. With practice you will learn to paddle straight and reasonably fast and comfortably.

Ocean & Sea Kayaking

If you are not familiar with the ocean than take the appropriate care such as always kayaking within the range of an active lifeguard station and NEVER going into ocean waves that are rougher than you can handle. Do not lose sight of oncoming waves and DO NOT exhaust yourself in the ocean! It is always better to end the day early and safe than push your luck when you're tired.

Sailing

With the addition of our Sea Eagle QuikSail (sold separately), you can also turn your Sea Eagle Kayak into a one of a kind sailing vessel that sets up in just less than one minute. Kayak sailing enhances the paddling experience and is great for touring and exploring. When sailing it is recommended to paddle up wind of your starting point and to sail downwind for the final leg of your journey. The QuikSail can also be used as a handheld sail utilizing the handles located on each side.

You can adjust the position of the sail to the left or right to tack downwind by either pushing against the legs of the frame with your feet, or by pulling the frame at the handles with your hands. Use your paddle to guide and steer your kayak.

Stand-Up Paddling

Our latest Sea Eagle Kayaks that feature the high pressure drop stitch inflatable floor are also rigid and stable enough to double as a stand-up paddleboard. For best results we recommend using an SUP, stand-up paddle).

Stand-up paddling adds a whole new dimension to paddling whether for exercise or just for fun. Stand-up paddling requires constant rebalancing with your feet and legs and in doing so you will find yourself using those muscles for a full body workout that standard kayak paddling just doesn't offer. Please note that stand-up paddling takes practice and experience to be proficient, so don't be discouraged if you fall a few times when you start out and keep practicing! Beginners should start out in calm, shallow waters where the temperature is good for swimming.

A good safety precaution is to practice falling out of your Sea Eagle in calm, shallow water that you can stand in with the temperature being warm enough that you can swim in it too. Before attempting this it's a good idea that you be a good swimmer and that you have someone with you to act as a spotter.

To begin, simply roll into the water and then try getting back in. The first technique we recommend is grabbing onto the side pontoon and literally rolling your body back over the pontoon and into the kayak. This will require some practice as it needs to be done quickly in order for it to be done correctly. The second technique is to use your arms to reach over the side pontoon to pull your body up and push yourself into the kayak. In both methods it is helpful to do it quickly and smoothly in one continuous movement.

To stand up in your kayak, have your SUP already in hand and make sure that you are in waters at least 1' or more so that the skeg is not scraping the bottom. Crouch down onto your knees in the center (2/3 back) of the kayak. Place one foot on the side of the drop stitch floor and stand up bringing your other foot up onto the floor so that it is positioned just a little front or behind your other foot.

Once you're standing, move your feet (one at a time) further to the side of the pontoons with one foot a little bit in front of the other. Use your SUP for balance, switching it from side to side as needed. As you paddle forward you can experiment paddling with longer and shorter strokes.

Please note that you can paddle two or more strokes on one side if you have the sufficient momentum. If your kayak turns towards the other side, switch your paddle to correct it. We also recommend to get used to moving your feet backwards and forwards while always using your SUP to counter balance your weight. When you feel comfortable, start paddling forward and keep most of your weight just back of the center of the kayak.

Stand-Up Paddling: Advanced

Once you've gained some experience in calm, shallow waters you may wish to expand your practice into deeper waters. To prepare for this you can try stand-up paddling on rougher water days in order to get used to the drop and pitch of larger lake or bay waves that can be caused by passing motorboats. When you feel comfortable paddling on flat-water in various wave conditions, you can consider stand-up paddling in the ocean.

Even when you're ready to start stand-up paddling in the ocean we recommend that you start out on a calm day and try to pick a day with small waves so that you can practice before heading out. Please note that if you are not comfortable swimming in the ocean than you should not be attempting to paddle standing up. To gain even more experience for stand-up paddling you may want to consider taking a class and/or safety course on stand-up paddling. This instruction manual is not sufficient for detailed lessons.

The first thing that you will need to learn is to paddle beyond the waves. As you become used to going through smaller ocean waves you can then try larger waves. In time, you can consider actually trying to catch small waves in ocean surf. It's a good idea to attempt this first while sitting down and paddling with a double ended kayak paddle and then as you become more proficient, standing up.

You will quickly discover that it is easier to paddle with the wind than against it while stand-up paddling because your body acts like a sail, going with the wind and as a sail in reverse going against the wind. We recommend keeping your double ended kayak paddle on board with you so that you can use your kayak in the traditional sit-down paddling position for times where you have to paddle against the wind. This way you're able to experience the best of both worlds in paddling your Sea Eagle!

Whitewater Rapids

Kayaking in whitewater can be a very challenging and rewarding experience, however it can also be very dangerous for those who do not respect the power of fast moving water. It is our recommendation that anyone partaking in whitewater activities should be certain they are a strong swimmer and also enroll in one of the excellent water safety course provided by your local Auxiliary Coast Guard or Power Squadron.

There are six classes of whitewater difficulty ranging from class I (easy) to class VI (extremely dangerous). Our Explorer Kayaks are our highest rated Sea Eagle Inflatable with a rating for use in up to class IV (advanced) whitewater. Please note that class IV rapids are powerful and should only be attempted by skilled, experienced kayakers.

It is very important to learn as much about a river as you can before you go down it and be prepared and ready to deal with any changing conditions or dangers that might arise. When using your Sea Eagle in whitewater conditions it is important to make sure that the drain valves are opened before venturing out to ensure that any water taken on can be released through the drain valve.

In addition to the equipment listed in this manual's **Safety** section, we strongly recommend the use of a helmet, gloves and rescue throw lines/ropes when partaking in whitewater activities.

A great source of background information for the topic of whitewater as well as various paddling techniques is Cecil Kuhne's Inflatable Kayaking (ISBN 0-8117-2810-2). We strongly recommend this and other related reading materials to better educate yourself with whitewater kayaking.

Safety

In a manual of this type it is impossible to give adequate space to the topic of water safety. For further information on boating safety, visit USCGBoating.org or enroll in one of the excellent water safety courses provided.

It is your responsibility to be aware of and comply with all relevant safety regulations. For all water recreation or sport you should have a reasonable swimming ability. Just as swimmers have a cardinal rule about not swimming alone, it is strongly advised that you should never go boating alone.

Boating Safety Tips

- Always wear a USCG approved PFD (life vest) at all times while on the water.
- Be aware of your local boating rules and regulations and abide by them accordingly.
- Check inflation levels each time before you go out and inflate your boat for a full 24 hours before undertaking long trips.
- DO NOT allow children to use Sea Eagle unsupervised.
- DO NOT consume alcohol while boating or operating a boat while under the influence of alcohol or drugs.
- DO NOT drag your Sea Eagle over rocks or gravel if it can be avoided.
- DO NOT exceed the certified maximum capacities of this boat under any circumstance.
- DO NOT go boating alone.
- DO NOT use compressors, co2 or compressed air for inflation, only use Sea Eagle recommended pumps.
- DO NOT use your Sea Eagle Boat as a personal flotation device as they are designed for leisure/recreation in mind.
- DO NOT sleep inside of your Sea Eagle while on the water.

Safety Equipment

The type of water conditions you are on should determine the type of safety equipment that you should have on board. For all types of boating we strongly recommend that every passenger wear a USCG approved PFD (personal flotation device) like a life vest. In most places this is a requirement by law, but from our point of view it is also an exercise of good judgment to have a PFD for all passengers. Other important items to consider for all types of boating...

Drinking Water & Snacks: Kayaking is a physical activity that can work up both a thirst and a sweat and especially on a hot or warm day it is a good idea to have drinking water readily available to you to prevent dehydration. Bring a good amount of water for all passengers as you want to avoid drinking the water you're kayaking in which may be full of contaminants.

Extra Clothes/Layers: You never know when the weather can change and it's a good idea to come prepared with extra clothing. If you have a dry (waterproof) bag than we recommend storing them inside so they're not damp in case of emergency.

First Aid-Kit: The contents of the kit may vary depending upon your preferences, but make sure to carry a kit that reflects the possible dangers for the conditions you are in.

Foot Pump/Repair Kit: Although our boats are both durable and rugged, it may be possible that you need to make a repair while on the water in which case you'll need the repair kit and the foot pump to re-inflate the boat. If this is your first repair, you may also want to bring this instruction manual with you.

Sun/Rain Protection: A hat can protect both your face and head from the rain or sun. You may also want to carry sunscreen with you as both the sun and the sun's reflection from the water can do serious damage to your skin. If you are out for prolonged periods of time you may need to reapply sunscreen as needed.

Whistle: Having a whistle readily available to you in case of emergency is a great way to attract the attention of others if assistance is needed.

Inflation Valves & Pumps



Recessed Air Valves

Remove the cap and press and turn the valve stem counterclockwise so that the stem is in the UP position. Only when the stem is in this position the valve will retain air. Turning the stem clockwise will put the valve in the down position for deflation.



MB-100 (Optional)

The MB-100 electric pump is designed for our higher pressured Sea Eagle Inflatables. Comes complete with a 12V DC power supply, hose and attachments.



A-41 Foot Pump

The A-41 Foot Pump is a high capacity pump made of durable ABS plastic. To use simply press the two halves of the foot pump together and connect the hose to the inflation port marked OUT. Insert the valve adapter at the other end of the hose.



Included are a cluster of seven valve adapters, with raised numbers on each arm of the cluster. The adapter marked number 1 is the only adapter needed for your Sea Eagle.



Recessed Adapter

The recessed valve adapter is located inside of the orange repair kit canister. Insert the ribbed end of the valve adapter into the hose on the foot pump. This valve adapter is not compatible for use with electric pumps.



Also included is a triple adapter similar to the one that is included with your A-41 foot pump. Using the large rounded nozzle, take the ribbed end and insert into the hose of the MB-100.



Make sure that the valve stem is in the up position and insert the valve adapter into the valve and turn clockwise to lock into position. Once the desired pressure is reached you should feel resistance on the foot pump.



Take adapter number 1 from the cluster and firmly push it into the large rounded nozzle. To ensure that the adapter is on as tight as possible, push it against a hard surface like a floor or table once it is connected.



Attach the ribbed end of the hose into the pump and with the joint attached to the hose, push it into the inflation port located directly above the pressure dial. The inflation port can be identified by the raised arrows on the red pump cover which point to it.



BTP Turbo (Optional)
The BTP Turbo electric pump comes complete with a nylon shoulder carry bag, 12V DC power supply, hose and adapters.



Adjust the pressure dial to read 3.2 PSI which is the operating pressure for your Sea Eagle.



Included are a cluster of seven valve adapters, with raised numbers on each arm of the cluster. The adapter marked number 1 is the only adapter needed for your Sea Eagle.



Open the hatch on the bottom of the MB-100 to reveal alligator clips. Using the clips, connect the MB-100 to a 12V battery (car or marine). Connect the red clip to the positive pole and connect the black clip to the negative pole.



Take adapter number 1 from the cluster and firmly push it into the grey joint that is already connected to the end of the hose. To ensure that the adapter is on as tight as possible, push it against a hard surface like a floor or table once it is connected.



When you are ready to inflate switch the pump on with the ON-OFF switch. The MB-100 will automatically stop once the set pressure is reached, however you will still need to switch the pump off when you are finished inflating.



Connect the other end of the hose to the red inflation port at the top of the pump, located near the ON and OFF buttons.



Adjust the pressure dial to read 3.2 PSI which is the operating pressure of your Sea Eagle. PSI is marked in red on the dial. Never turn the dial when the device is under pressure as this will immediately cause the instrument to break.



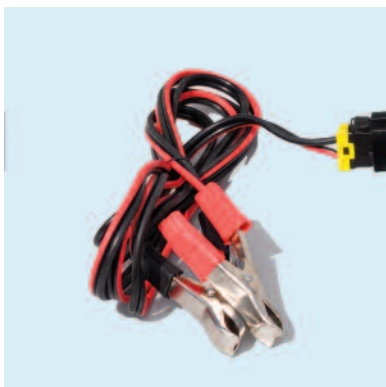
To charge the portable battery, plug it into the charger and then plug the charger into a household electrical outlet. The light on the battery charger will blink red until fully charged. When it is fully charged the light will be a solid green.



Connect the cord at the end of the power supply into the end of the cord attached to the pump.



It is recommended to keep the Turbo Pump inside of the carry bag to make transportation easier and to protect the pump from sand which could jam it. The carry bag comes equipped with compartments for the pump, battery and charger.



Connect the Turbo Pump to a 12V battery (car or marine) using the alligator clips at the end of the extension cord. Connect the red clip to the positive pole and the black clip to the negative pole.



Press the ON button to begin inflation. The pump operates in two stages which can be identified by the noise of the turbine at the start, followed by the piston. The pump automatically stops once the pressure is reached.



If you ordered the Turbo Pump Kit you can also connect the pump to the portable battery in place of the alligator clips.



Air compressors that are designed for other uses like tire inflation (usually around 50 PSI) can easily harm your Sea Eagle which works at a much lower pressure of 3.2 PSI. For this reason we recommend only using Sea Eagle pumps.

Assembly & Inflation



Locate a relatively clean space to unpack your Sea Eagle so that it is laid out flat. If you plan on using your kayak in calm or flat-water we recommend installing the skeg first before you begin inflation. If you plan to use your kayak in rapids the skeg does not need to be installed.



Partially inflate both the side pontoons and drop stitch floor making sure that the opening in the floor is centered with the air valve in the bow and that the floor is tucked underneath the pontoons. Fully inflate the drop stitch floor and then fully inflate the side pontoons.



Before installing make sure that the key lock is in the out position of the skeg. Simply slide the skeg into the skeg base underneath the stern and then slide the key lock into the small gap underneath the skeg to lock it into position.



Deluxe Inflatable Seat

Inflate the seat so that its reasonably hard. You should be able to push your finger about 3/4" You can also change the center of gravity by deflating the bottom portion of the seat. A softer bottom equals a lower seating position.



Check the 4 drain valves through the oval cut-out at the stern of your kayak. Make sure the valves are closed tightly if you plan on using your kayak in calm or flat-water. Otherwise open them for drainage if you plan on using your kayak in rapids.



One-Way Air Valve

The deluxe seat use deluxe one-way air valves for inflation. The deluxe seat has separate inflation chambers for both the back and bottom of the seat. You will also need a separate adapter to inflate the deluxe seat.



When using in rapids, tuck the drain valve caps underneath the drop stitch floor. This will make sure that the cap does not interfere with the draining process and still keep the cap readily available to you should you find yourself back on calm, or flat-water.



The triple nozzle adapter comes with the A-41 foot pump. Inflate the deluxe seat with the large rounded adapter on the triple nozzle with the A-41 foot pump. The seat is low pressure and only requires a few pumps with the A-41. To deflate, simply unscrew the valve from the base.



Attach the deluxe seat using the clips on the seat and the D-Rings on your kayak. Adjust the straps on the seat for comfort. If you're solo paddling, position your seat in the bow of your kayak.



Tall Back Seat
Designed to provide maximum back support, the tall back seat sets the user in a straighter sitting position for kayaking. The tall back seat comes equipped with both a back and front strap (w/clip) and attaches to the D-Rings on your kayak.



Attach the tall back seat using the clips on the seat and the D-Rings on your kayak. Adjust the straps on the seat for comfort. If you're solo paddling, position your seat in the bow of your kayak and attach the front straps to the first set of D-Rings and the back to the second set.



TIP: Its important when getting in that you place your weight on the seat pad while trying not to knock back the upright backrest pad. This may take a little practice, but is very easy and keeps the tall back seat in the proper position so that it provides maximum back support.



4-Part Paddle

Each paddle includes two shafts, two blades and 2 drip guards. Its important to follow the directions exactly as assembling the paddles incorrectly may leave you with an inoperable paddle that cannot be disassembled.



Begin by locating the shaft with 3 pre-drilled holes and using the push pin on the other shaft, join the two shafts together so that the 3 pre-drilled holes now form the middle of the paddle.



The 3 pre-drilled holes are used for feathering so that you can position one blade to 90° from the other. This makes paddling into a stiff breeze easier because the blade that is not in the water will be able to slice through the wind with little resistance.



Next, slide a drip guard over each end of the shaft, positioning the drip guards so they are on the outside of your hands (closest to the pinky finger). Connect the paddle blades to the end of each shaft to complete assembly.

Optional Accessories



QuikSail

Converts any kayak into a sailing vessel. Easily deploys in under one minute, breaks down to just 43" for convenient storage in the bow or stern and sails up to 45° left or right.



The seat board comes pre-assembled. Locate the two aluminum filler tubes and align them with the pre-drilled holes in the center of the board.



Drop Stitch Footrest

We now offer a drop stitch adjustable footrest for our FastTrack and Explorer Kayaks. To use place in the kayak when it is not inflated and then inflate it to full pressure. Air pressure will keep footrest secure in its position.

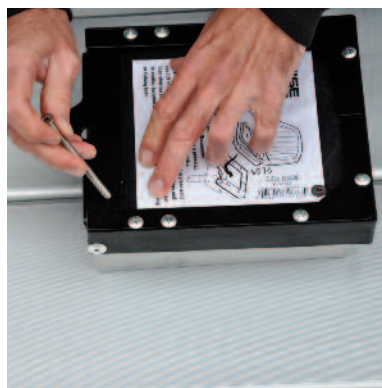


Hardware for the swivel seat comes standard with the fishing module and includes 4 bolts, 4 washers and 4 nuts.



Storage Bags

Rugged 440 Denier construction make these storage bags a great place for gear, snacks, drinking water, repair kit and even the foot pump. These bags are not waterproof. Included with both the Pro Kayak & QuikSail Boat Packages.



Line up the seat mount on top of the aluminum filler tubes in the center of the aluminum seat board. Once aligned you can then insert the four bolts through the top of the seat mount.



Fishing Module

Designed to give you a better line of sight for hours of fishing. Comes complete with swivel seat, module base and 2 rod holders. You will need both a Phillips head screwdriver and small crescent wrench for assembly.



Once the bolts are in you can then install the washer and the bolt on the underside of the seat board where the four bolts stick out.



Use the screwdriver at the top of the bolt to hold it in place and at the same time use the crescent wrench on the nuts on the bottom to tighten the bolts for the seat mount.



Once the release-a-seat mount is installed you can slide the swivel seat into the seat and place the entire fishing module inside of your fully inflated Sea Eagle. The fishing module will fit snug inside of the kayak and doesn't require any further tightening.



The fishing modules also comes complete with two fishing rod holders, hardware and mounts. There are two pre-drilled holes at the same ends of the aluminum seat board.



Stainless Steel D-Rings

Reinforced PVC fabric and stainless steel make D-Rings a permanent addition to your boat and ideal for accessories, custom seating arrangements or tie-down points for gear. Includes glue.



Install the rod holder mount into the platform and secure by tightening the screws with the Phillips head screwdriver.



Double D-Ring Strap

This nylon strap has a D-Ring at each end and goes underneath the drop stitch floor allowing you to position and re-position these D-Rings anywhere inside of your kayak. Can be used for tie-down points, thigh straps and more!



Once the rod holder mount is installed, insert the rod holder into the mount.



EZ Cart (small)

This simple to use and easy to assemble cart wheel system fits allows you to roll your kayak from where you inflate to where you launch it. Packs down for easy transport. Please note this is not a trailer and should not be used with a vehicle.



Thigh Strap Set

Thigh straps increase paddling power and gives you improved control. By transferring the force of paddling to the water, they increase your speed and reduce fatigue. Thigh straps are highly recommended for use in whitewater.



Waterproof Bag

This clear waterproof bag will hold your cell phone, camera or any other small article you want to stay dry. Included with both the Pro Kayak & QuikSail Boat Packages.



Attach each of end of the thigh straps to the D-Rings at the top of the pontoon and the ones near the floor.



Only fill your waterproof bag about half way, or no more than 3/4 of the way full. To close the waterproof bag it must be folded three times.



Adjust the straps so that you are comfortable and secure, making sure that they aren't too tight so that you can get out of the kayak easily and quickly.



Starting at the top, fold the bag once so that it aligns with the back of the strip of velcro and then again keeping the strips aligned. Make the final fold pressing the two strips together.



Squid Anchor Kit

No assembly required, it's fast and easy to use. It weighs only about 7 oz. when empty and can be filled up to 11 lbs. The anchor can also be flipped inside out to become its own compact storage bag.



Before using on the water, make sure that you have triple folded your waterproof bag and that it is tight and secure. Do not roll your bag.



Child's Life Vest

Children are required by law to wear life jackets in many jurisdictions. Designed for children 50-90 lbs. in weight, this U.S. Coast Guard life jacket features secure belts for a comfortable, secure fit.



Paddling Life Vest

U.S.C.G approved! This type III PFD is designed specifically for paddling and rowing comfort with more room under the arms. Comes in various sizes and features vest pocket, zipper closure and adjustable nylon straps for a secure fit.



3M Marine Cleaner

Cleans, shines, conditions and protects vinyl, rubber and plastic surfaces. Deep cleans dirt and grime, enhances appearance. Restores natural sheen, protects surfaces. Fresh lemon scent.



303 Protectant

We all try to keep our boats clean, but there are some stains you just can't avoid. 3M Marine Cleaner & Restorer can remove the toughest stains from mud, bird droppings, oil, and many others.

Deflation & Storage

Although PVC material can become brittle in extremely cold temperatures, you can still safely store your Sea Eagle in them so long as you avoid dropping it and do not subject it to any sudden impacts.

If you're planning to leave your Sea Eagle outside, be sure to keep it raised up off of the ground. It's also a good idea to keep it covered so that it is not directly exposed to berries, leaves, rain, sunlight and other elements. Sea Eagles that are left in water will most likely have to be emptied from time to time.

Make sure that your boat is dry before storing your kayak for more than a few days, to remove any excess moisture that could cause unsightly mildew. Choose a cool, dry spot when storing in an enclosed area like basement, closet or garage.



Begin by deflating your kayak. To deflate, press down on the valve stem and turn clockwise to lock into position. Most of the air is immediately released. Excess air can be pushed out as you roll up the kayak.

Allow about a minute or two so that more air can be released and then from the stern, begin by rolling one side of the kayak toward the center and the other side of the kayak over the first.



Starting from the stern, roll the kayak up. It is important to roll the boat tight from the beginning to ensure you get the most compact storage possible. When you reach the end, tuck the bow underneath the hull and place inside of the boat bag and secure with the nylon straps.

Troubleshooting

If your boat is losing air it doesn't necessarily mean that its leaking. For instance a boat that is inflated late in the day with 90° air may cool 20° overnight. The cooler air will exert less pressure on the hull and the boat will appear softer the next morning. When there has been no variation in temperature and your boat is losing air then it is time to start looking for the leak.

The first thing you should do when looking for a leak is to actually look at the boat. Visually inspect the boat from a few feet away and if necessary, flip it over and closely check the outside. Any large leaks when your boat loses a considerable amount of air should be clearly visible.

Be sure to check the tightness of the one-way recessed valves as well and if necessary, tighten them with the valve wrench included in the orange repair kit canister.

If you have a rough idea of where your leak is but can't see it, you may want to try listening for it as you may be able to hear the air escaping and pinpoint the leak.

Other troubleshooting techniques you can try to locate the leak is to douse/spray a mix of dishwashing liquid over suspicious areas. The leak may produce bubbles that will pinpoint the location of the leak.

Repairs

Although our Sea Eagles are very rugged and tough, you may still experience the occasional puncture through use of your boat. Fortunately most repairs are fairly easy and only take a few minutes.

For an extensive repair please contact us directly for assistance or a quote to have it sent back and repaired at our facility. Repair fees start at \$75.00 and do not include return shipping charges.



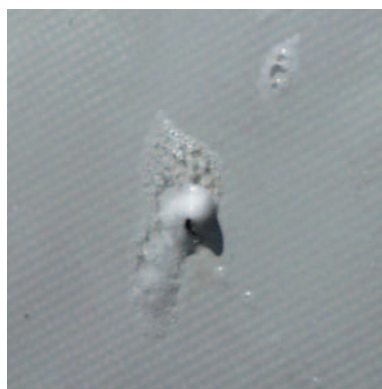
Repair Kit

All Sea Eagles come standard with this repair kit which includes both PVC patches and PVC glue. Repair kits that are included in boat package purchases also include the recessed valve adapter and valve wrench.



PVC Based Glue

For repairs on our boats you will need to use a PVC based glue. We suggest this 12 oz. can of Vyna Bond if you need more glue than what comes standard in the repair kit.



Repair: Pinholes

Deflate your boat and thoroughly clean and dry the area that is to be repaired. For small punctures less than 1/8" apply a small drop of glue and allow 12 hours to dry.

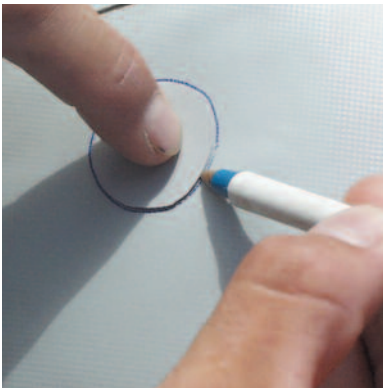


For immediate use allow 30 minutes to dry and then inflate the compartment with the repair only 3/4 full and be sure to make a more permanent repair later.



Repair: Patching

Leaks larger than a pinhole can be patched. Most patches can be done in a few minutes, but we do offer a repair service for more complex jobs out of warranty.

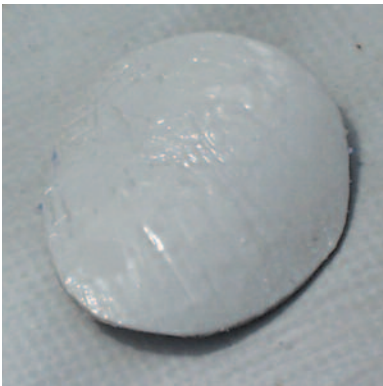


Using a ball point pen, trace the outline of your patch which should be large enough to overlap the damaged area by approximately 1/2". Angle the pen inward a bit so that the ink will be covered by the patch later.



2-Part Adhesive

The adhesive that comes standard in your repair kit works for most repairs and installations, but for more detailed and extensive repair we recommend a 2-part PVC adhesive.



Apply adhesive to the dull side of the patch and around the area to be repaired. Coat the affected area lightly but completely with glue.



Methyl Ethyl Ketone

Methyl Ethyl Ketone or MEK is a solvent used to dissolve PVC based glue in case you need to remove a D-Ring, glue residue or patch. MEK is a strong solvent and can damage the material to the boat so use it very carefully and sparingly.



Place the patch on the damaged area and press down firmly. Let the glue sit for 2-4 minutes until it appears tacky. If glue does not hold, heat patch with a hair dryer.



MEK is very flammable, keep away from fire, lit cigarettes or sparks. When handling MEK we recommend wearing rubber gloves. Be sure to use MEK in a well ventilated area and heed all warnings from the manufacturer.



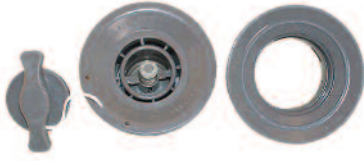
A temperature of 160° degrees will activate the adhesive and from there you can press firmly on the patch until cooled. DO NOT use a hair dryer on an inflated boat and NEVER use a heat gun on your boat.

To remove a patch with MEK, dip a cotton swab and apply it to the outer edges. The glue will start to dissolve and the patch will begin to separate from the boat. Continue to carefully apply MEK to the underneath of the patch and continue peeling it off. Once removed you can also clean off any residual glue with the MEK solvent.

To reapply a new patch, allow approximately 30 seconds for the MEK to evaporate and apply the item to the boat.

Valve Replacement

DO NOT change out the valve unless you are sure it is broken. In most cases the valve will not leak. Because the base of the valve is built into the boat it cannot be replaced without cutting the chamber open.



Should you need to replace the valve than we recommend the following tools and methods. Suggested tools include channel lock pliers, valve wrench (included with your repair kit) vice grip pliers and piece of repair material (also found in the repair kit).



Inflate the chamber to full pressure if possible and loosen with the valve wrench by turning it counterclockwise. Deflate the chamber and unscrew the valve body from the base.



Place the material in the jaws of the channel lock pliers to protect the hull material. Once the body of is unscrewed from the base, pull the body from the opening and insert the replacement. base. The opening is very tight, so you may have to pull on it hard.