

SEA EAGLE.com[®]



Super Motormount Boat

SE-124 SMB

Instruction & Owner's Manual

For video instructions visit SeaEagle.com

Sea Eagle Boats Inc.
19 N. Columbia Street, Suite 1
Port Jefferson, NY 11777
1-800-748-8066

September 2011

Introduction

Thank you for purchasing one of our Sea Eagle Inflatable Boats! With over 40 years of experience in this business we strive to make our products the best on the market and with loyal Sea Eagle customers such as you we believe we are achieving this goal.

Although the 124 SMB Super Motormount Boat is the largest in our Motormount Series and can hold up to 1,560 lbs., this 12' 4" 4-person boat still packs easily in a car trunk and sets up in just 15 minutes. This time is estimated with the foot pump and may take longer the first time around until you are familiar with all the parts and steps necessary for setup.

Orders placed directly with SeaEagle.com include a packing list when the items are delivered. For orders placed with dealers or resellers it is advised to contact that dealer or reseller directly if there are any discrepancies with your order. It is important to verify everything is correct and accounted for once you receive your order so that we if there is any issue we can resolve it A.S.A.P for your benefit.

Our office hours are from 9-5, Monday-Friday, EST and we can be contacted directly by our toll free number at 1-800-748-8066.

Decals, Stickers & Registration

If you plan to install a motor on your Sea Eagle, most states will require that you register your boat with the state. It is also possible that at this time you will be charged your own State sales tax on the order if you did not pay sales tax when you ordered it. The Department Of Motor Vehicles in your state will require a MSO (Manufacturer's Statement of Origin) and in some states the Bill Of Sale documentation, both of which Sea Eagle has provided to you.

After registration your state may also require that you apply the registration number to your boat hull. The use of decals and stickers is not recommended as once applied they will tend to crack and peel over time with inflation and deflation of your boat. Applying them to a small piece of hard plastic or marine plywood and hanging it from the boat is recommended where permitted. Otherwise you can apply the registration numbers with a PVC based paint or permanent marker.

Pumps & Valves



A-41 Foot Pump

This is our most commonly used foot pump and even with a boat as large as the 124 SMB inflation is very easy with this pump. This pump includes a number of different styled adapters but the one that you will need is gray and has 3 different fittings attached to each other. The fitting that works with the deluxe one-way valves on this model is the rounded end on this cluster that is attached to two pointed nozzles.

Although not everyone prefers to use a foot pump for inflation, SeaEagle.com always recommends carrying one on board for safety.

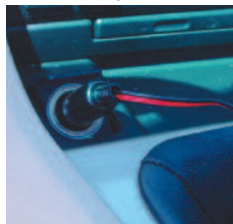


MB-50 Electric Pump

The MB-50 electric pump works with the 12-Volt power outlet in your automobile to inflate your Sea Eagle Inflatable.

The star shaped valve set and the blue deflation cap are not necessary for our boats. Make sure your pump is turned off

and insert the power adapter into the outlet. If you have a weak battery you may want to keep your engine running while using the pump.



No extra nozzles are needed to inflate the main air chambers of your boat, just insert the pump into the valve and switch it on. Do not drop or move your pump suddenly while it is turned on.



Deluxe One-Way Valve

These valves are used on all 3 chambers and make inflation even easier than ever. The outer cap of the one-way valves makes the permanent seal and must be fastened firmly. Be sure that the threads are not crossed when tightening the cap or screwing the valve base. Also check to make sure that there is no sand or dirt that can break the seal.



To inflate your boat, simply place the large round nozzle into the valve and begin pumping with the A-41 foot pump.



To deflate your boat, simply unscrew the inner valve and remove. Most of the air will be released within 1-2 minutes.

Any excess air left over can be sucked out with the A-41 foot pump and by rolling the boat up from the opposite end of the valves.

Inflation & Setup



Inflation

To begin unroll your boat on a flat surface and screw in the base of the valves into the three main chambers. Inflate chamber 1 less than 50%, just enough to give it buoyancy for installing the floorboards & motor mount.



Floorboards

Place the floorboards inside of the boat and they will overlap in the middle



Lift the floorboards at the center to insert the H-Strut between them and then force them down.



Once the floorboards are connected by the H-Strut and flattened, continue to install the side struts on each side of the floorboards where the bow and stern meet at the H-Strut.



Motor Mount Installation

Attach the L-Bracket and wooden motor mount to the motor mount bench. You'll want to mount the wood so the motor will be as low as it can go when installed.



The L-Brackets are fastened in two places, to the wooden motor mount block and to the aluminum motor mount slat. Connect the L-Bracket to the aluminum motor mount slat first by taking 1 short bolt & 1 washer and pushing the short bolt through the bottom of the motor mount slat and through the bottom of the L-Bracket.



Once through you can fasten the long bolt with the black knurled nut. Repeat this process for all 4 L-Brackets. To connect the L-Bracket to the wooden motor mount block, take 1 short bolt & 1 washer and put the short bolt through the L-Bracket and through the wooden block and then fasten it with the knurled nut. Repeat this process for all 4 L-Brackets.



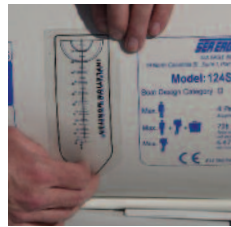
Place the aluminum motor mount bench between the grommets which are positioned above the side carry handles.



Place the aluminum bench seat between the grommets behind the rod holders and in front of the valve for chamber 1.



Starting at the grommet closest to the rod holder, slide the motor mount rod through the grommets and through the loops on both aluminum benches. Once the rod is installed put the rod pin through the hole at the end of the rod. Repeat this process for both sides.



Once the floorboards and motor mount are installed, inflate chamber 1 approximately 80% so most of the boat is smooth (you may still have a crease in the bow). Over inflating chamber 1 may cause over-stretching when chamber 2 is fully inflated. Using the inflation monitor inflate chamber 2 to 10 on the monitor.

Finally inflate chamber #3 (floor) until it is rigid and you are ready to venture out with your Sea Eagle 124 SMB!

124 SMB Accessories (Optional)



Swivel Seat w/Spider & Seat Caddy

The swivel seat is one of our most popular seats for many of our larger boats as it offers both cushioned comfort and support for your back. The only way to use the swivel seat with the 124 SMB is to also use the seat spider stand.



Deluxe Speedboat Seat

Our deluxe ideal for front seat passengers as it sits lower to the floor than the bench seat, is easily inflated & features a nylon cover for firm comfortable back support. Held in place by two straps (one on each side) that can be secured by clipping the straps to the grab line that surrounds the boat.



EZ Cart (W)

This simple to use and easy to assemble cart wheel system fits under the 124 SMB making transport even easier. Allows you to roll your Sea Eagle to & from your launching point. Breaks down for easy storage.



124 Wooden Bench Seat

The 124 bench seat (58" x 10", 11 lbs) is easily installed, by running the grab line through the pre-drilled holes. Made of 3/4" 15 ply marine plywood this seat can hold the weight of two adults and is resistant to saltwater, gas & oil. Locate the seat between the two sets of oarlocks/carry handles.



Canopy for 124 SMB

Keeps you cool and protected from harmful UV rays of the sun and dry from the rain. PVC Coated polyester canopy & folding aluminum tubing. Folds down easy on the water to go fishing.



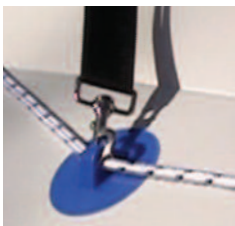
Begin by feeding the aluminum tubing through the canopy at the openings on each end of the canopy.



Snap the aluminum tubing into the v-brace, and repeat for the other side.



Secure the canopy into position by inserting the bolt through the metal plate. Once through place the brass washer on the bolt and feed the bolt through the side carry handle and secure with the black knurled nut. Make sure that the metal plate is on the inside of the boat.



Take the two bow strap on the v-braces and connect it to the grab line on the front grommets on the bow of the boat.



Take the stern strap on the v-brace and connect it to the grab line on the very last grommet on the stern of your boat, repeat this process on the other side.

Motors

Although you can use up to a 6HP gas engine (15" short shaft/75 lbs. maximum) on the 124 SMB, electric motors are a great alternative as they are generally lower in cost and easier/cleaner to maintain. We do offer a variety of different Minn Kota & Torqeedo Electric Motors.



Minn Kota

For these motors you will need to purchase a 12V deep cycle marine battery which you can likely purchase at stores where sporting or marine goods are sold. Electric motors are measured in pounds of thrust that push the boat and are generally built more for fishing and trolling slowly than for power & speed (like gas engines). Because of this it's hard to measure out an exact conversion for 'Thrust vs. Horsepower', however it's estimated that most trolling motors are about a 1HP at their maximum. It's also important to make sure you get the right type of motor as most of the Minn Kota models we sell are designed for fresh water (unless otherwise stated).



Torqeedo

Although technically the Torqeedo is an electric motor, it's really unlike any that the market has seen before. With the Torqeedo you get all the practicality of electric motors as it's lightweight and easy to clean and maintain. You also get the benefits of a gas engine motor though as the Torqeedo can range between 2HP-3HP depending upon what model you get. The Torqeedo comes with its own lithium ion battery which makes it easier (and lighter) to transport than the Minn Kota, but at the same time you don't get the same longevity out of the battery like you do with the Minn Kota and they are also noisier where fishing is concerned. Both the Torqeedo Travel 801L & 1003S models are compatible with the Sea Eagle 124 SMB.

Note: All Minn Kota & Torqeedo motors that are purchased through Sea Eagle are covered by their own manufacture warranties and as such are not returnable.

Safety

In addition to properly registering your Sea Eagle, it is your responsibility to be aware of and to comply with all relevant safety regulations. In all water sports you should have reasonable swimming ability. Just as swimmers have a cardinal rule about not swimming alone, you should never go boating alone.

The next point to consider is having a personal flotation device (PFD). Not only is it the law, but from our point of view, it is just plain foolish not to have PFD's for everyone aboard. You must use U.S. Coast Guard approved PFD's. The type of water conditions you are going in should determine which is safer for you.

Depending on the circumstance and the type of boating you enjoy, you should consider other safety measures (i.e. if you're white water rafting, it might be wise to wear a wet suit, gloves, and even some sort of protective helmet).

In a manual of this type it is impossible to give adequate space to the topic of water safety. We strongly suggest, however, that you enroll in one of the excellent water safety courses offered by the Power Squadron or US Coast Guard Auxiliary in your area, for more info visit www.uscgboating.org.



Disassembly & Deflation

If you are planning on storing your boat for a long period, you should wipe it down with a towel to remove any moisture and prevent any mildew forming on your boat.



Deflate by unscrewing all of the deluxe one-way valves from the 3 main chambers. You can expedite this process by using the foot pump to suck any excess air out of the boat. Rotating the tube from left to right will help with removing the motor mount from the top tubes. Remove both the floorboards and motor mount before you roll up your boat.

After all the valves are opened, allow the boat to deflate for a minute or two. Flip the boat over. Fold the left side of the boat over. Fold the right side over the left.



Starting from the bow, roll toward the stern of the boat tightly to force out any remaining air.



When you are done your boat will be compact and ready for storage.



degrees overnight. The cooler air exerts less pressure on the hull, so it could appear soft the next morning. If there has been no temperature variation, you need to start looking for a leak. Below are the three best methods

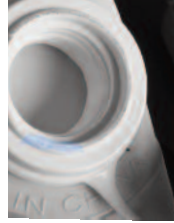
1) Visual inspection. Get a good look at your boat from just a few feet away. Flip it over and closely check over the outside. Any large leaks should be clearly visible.

2) Listening. If you have a rough idea where your leak is, you can sometimes hear it in a quiet room.

3) Soapy water. Use a mix of dishwashing liquid and water in a spray bottle, and spray over suspicious areas. Any leak will produce bubbles that will pinpoint the location of the leak.

Valve Checks

Look, listen, and if necessary, spray soapy water around your valve and the valve base. Leaky valves have several causes:



Check the O-Ring at the base of the valve opening for dents. Denting can occur when the valve body lies across the O-Ring during storage. Heat the O-Ring with a hairdryer until the dent eases itself out. This should not take more than a few minutes.

Crossed threads. Make sure that both the inner valve and the outer cap are firmly screwed together. If threads are crossed on either item a slow leak could result. A good way to avoid this is to first turn the outer cap back 1/4 turn.

Grains in Diaphragm, threads, or O-ring. Check the black diaphragm at the bottom of the inner valve for grains between the diaphragm and the inner valve. Also check the threads on the inner valve, boat hull, and outer cap for any dirt or sand which might break the seal. Check the O-ring on the inside of the outer cap for any sand or contaminants which might break the seal.

Care & Maintenance

There is very little that you have to do to keep your boat in almost new condition for many years. You may store it inflated or deflated. If you leave it outside, you should raise it up off the ground and cover it with a tarp if it is going to be in direct sunlight or exposed to leaves, berries or rain. If you leave it in the water, you will probably have to empty out the water every time it rains (this will also harm the wooden floorboards over time).

We do not recommend using your boat below 30 degrees Fahrenheit. PVC material can become brittle in extremely cold temperatures. This will not harm a boat stored in cold conditions as long as it is not dropped or subjected to a sudden impact in the extreme cold. If you store it in a closet, basement or garage, we recommend picking a cool, dry spot, making sure the boat is clean and dry before you pack it up - otherwise mold can accumulate while it is stored.



Periodic use of 303 Protectant, available in the Accessories section of SeaEagle.com, will improve the UV resistance of the PolyKrylar hull material of your Sea Eagle.



For stain removal, we recommend the use of 3M Vinyl Cleaner and Restorer, also available at SeaEagle.com to remove the toughest stains.

Troubleshooting

Air Leaks

If your boat appears a bit soft, it might not be because of a leak. If the boat was inflated late in the day with 90 degree air, that air might cool 20

Repairs

Repair Kit

Through use you may occasionally puncture your boat. Most leaks only take a few minutes to repair. Your boat comes with a repair kit that includes both patches and PVC based glue.

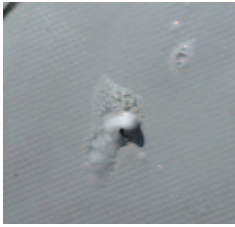


Small Repairs

Deflate your boat. Thoroughly clean and dry area to be repaired. For a small puncture (less than 1/8th") apply a small drop of glue. Let dry 12 hours. If you need to get on the water sooner, let dry 30 minutes and then inflate the boat, inflating the compartment with the repair only 3/4 full. Be sure to make a permanent repair later.

Patches

Leaks larger than a pinhole can be patched. Most patches can be done in a few minutes, but we do offer a repair service for more complex jobs out of warranty. Our minimum repair fee is \$75. and you will be responsible for freight expenses to our facility in Port Jefferson and return freight to your destination.



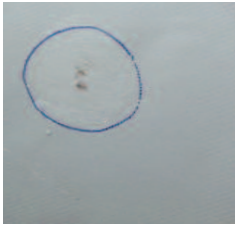
First locate the leak by the methods above. Soapy water will bubble out from the source of the leak.



Thoroughly clean the area surrounding the leak to remove any dirt or grime.

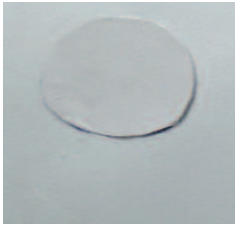


Cut a piece of repair material large enough to overlap the damaged area by approximately 1/2". Round off the edges, and place over the leaking area. Using a ball point pen, trace the outline of the patch. Angle the pen inward a bit so that the ink will be covered by the patch later.



Apply adhesive to the dull side of the patch and around the area to be repaired. Coat the affected area lightly but completely with glue.

Let the glue sit for 2-4 minutes until it appears tacky. If glue does not hold, heat patch with a hair dryer and press firmly until cool. Note: Do not use hair dryer on an inflated boat.



Place the patch on the damaged area and press down firmly. Use a hair dryer to heat the patched area. A temperature of approximately 160 degrees will activate the adhesive.